



# INSTRUCTION BULLETIN

No. 9012895  
Machine: T17 / M17  
Published: 07-2016  
Rev. 01

**NOTE: DO NOT DISCARD the Parts List from the Instruction Bulletin. Place the Parts List in the appropriate place in the machine manual for future reference. Retaining the Parts List will make it easier to reorder individual parts and will save the cost of ordering an entire kit.**

*NOTE: Numbers in parenthesis ( ) are reference numbers for parts listed in Bill of Materials.*

Installation instructions for **kit number 9020085 - (T17 machines NA serial numbers 000000-010999 / EU serial numbers 0000-0330) / 9015001 (T17 machines NA serial numbers 011000- / EU serial numbers 0400- ) (M17 All machines) - T17 / M17 machines without optional scrubbing side brush**

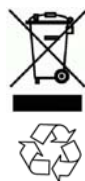
**9020086 - T17 machines with optional scrubbing side brush**

## SYNOPSIS:

This kit contains the parts needed to install an ec- H2O system onto T17 scrubbers / M17 sweeper- scrubbers.  
Please follow step-by-step instructions.

## SPECIAL TOOLS / CONSIDERATIONS: NONE

(Estimated time to complete: 5 hours - machines without optional scrubbing side brush / 6 hours - machines with optional scrubbing side brush)



## PROTECT THE ENVIRONMENT

Please dispose of packaging materials, used machine components such as batteries and fluids in an environmentally safe way according to local waste disposal regulations.

Always remember to recycle.

## PREPARATION: ALL MACHINES

1. Completely empty the solution and recovery tank. Refer to the Operator Manual for instructions how to empty both tanks.
2. Carefully clean all remaining cleaning solution residue from inside the solution tank. Any cleaning solution left inside the solution tank could cause the ec- H2O system to not function properly. Refer to the Operator Manual for instructions how to clean the solution tank.
3. Park the machine on a clean level surface and turn off the machine.
4. Remove the brushes from the main scrub head. Set the brushes aside.
5. **Machines with cylindrical scrub heads only:** Remove the debris trough from the back of the main scrub head. Set the debris trough aside.
6. **Machines with optional scrubbing side brush assembly only:** Remove the brush from the side brush assembly. Set the brush aside.
7. Remove the rear squeegee assembly from the machine. Set the rear squeegee assembly aside. Refer to the Operator Manual for instructions how to remove the rear squeegee assembly.
8. Turn on the machine and completely lower the scrub head.

9. Turn off the machine, set the parking brake, and remove the key.

**FOR SAFETY: Before leaving or servicing machine, stop on level surface, turn off machine, set parking brake, and remove key.**

10. Lift operator seat open and lock seat into open position.
11. Disconnect the battery cable from the machine.



**WARNING: Always disconnect battery cable from machine before working on electrical components.**

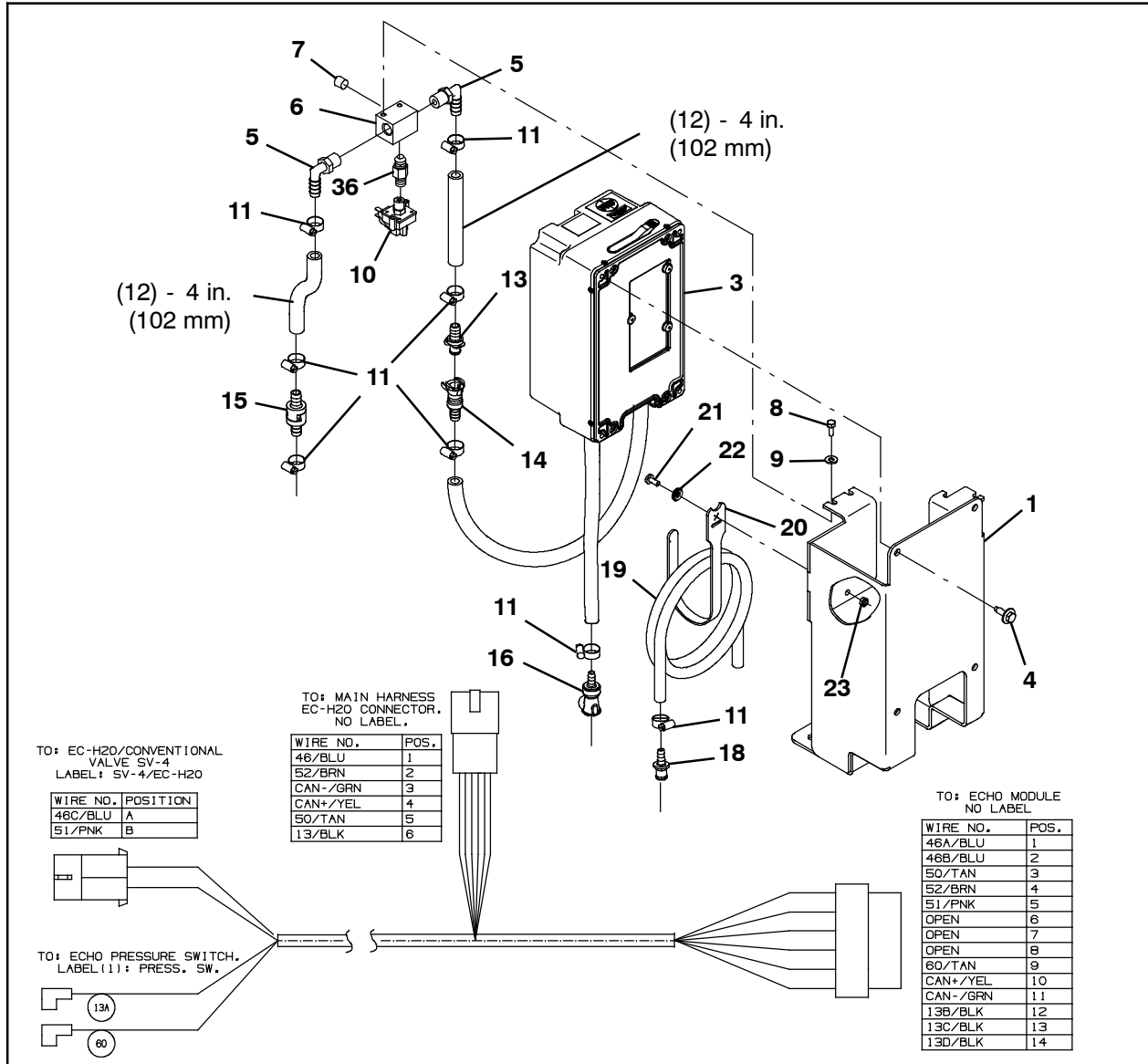
12. Jack up the front end of the machine high enough to access the area under the machine where the ec- H2O pump is to be installed. Place jack stands under the machine and lower the machine onto the jack stands. (Fig. 1)



**FIG. 1**

**FOR SAFETY: When servicing machine, block machine tires before jacking machine up. Use a hoist or jack that will support the weight of the machine. Jack machine up at designated locations only. Support machine with jack stands.**

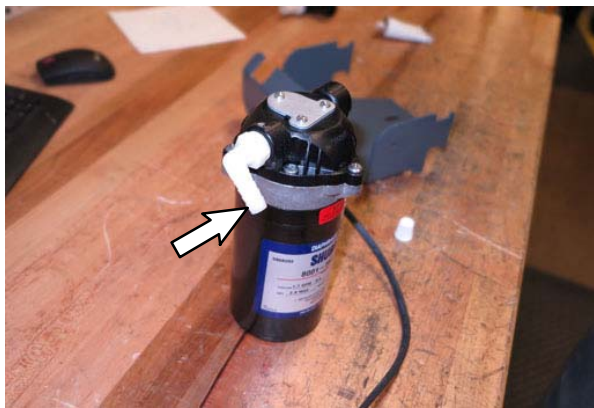
**INSTALLATION: MACHINES WITHOUT  
OPTIONAL SCRUBBING SIDE BRUSH:**



**FIG. 2**

1. Connect the ec-H2O harness (37) to the ec-H2O module (3). (Fig. 2)
2. Use one M5 pan screw (21), one flat washer (22), and one M5 hex nut (23) to install the hook and loop fastener (20) onto the ec-H2O mounting bracket (1). (Fig. 2)
3. Use four M6 SEMS hex screws (4) to install the ec-H2O module (3) into the ec-H2O mounting bracket (1). (Fig. 2)
4. Thread the brass straight fitting (7) into the steel fitting (6). (Fig. 2)
5. Thread the brass snubber fitting (36) into the steel fitting (6). (Fig. 2)
6. Thread two plastic elbow fittings (5) into the steel fitting (6). (Fig. 2)
7. Thread the pressure switch (10) onto the brass snubber fitting (36) / steel fitting (6). (Fig. 2)
8. Use one hose clamp (11) to connect a 4 in. (101.6 mm) PVC hose (12) to each plastic elbow fitting (5) on the steel fitting (6). (Fig. 2)
9. Use one hose clamp (11) to connect the check valve (15) to the 4 in. (101.6 mm) PVC hose (12). (Fig. 2)

10. Use one hose clamp (11) to connect the plastic straight fitting (13) to the other 4 in. (101.6 mm) PVC hose (12). (Fig. 2)
11. Use two M5 hex screws (8) and two flat washers (9) to install the check valve assembly assembled in the previous steps onto the ec- H2O mounting bracket (1). (Fig. 2)
12. Use one hose clamp (11) to connect the plastic straight fitting (14) to the hose from the ec- H2O module (3) IN port. (Fig. 2)
13. Use one hose clamp (11) to connect the plastic straight fitting (16) to the hose from the ec- H2O module (3) IN port. (Fig. 2)
14. Connect the hose from the ec- H2O module (3) IN port to the plastic straight fitting (13) on the check valve assembly. (Fig. 2)
15. Connect the ec- H2O harness (37) to the pressure switch (10). (Fig. 2)
16. Install the elbow fittings (18) onto the ec- H2O pump. Note orientation of both fittings. Both fittings must be oriented as shown. (Fig. 3 / Fig. 4)

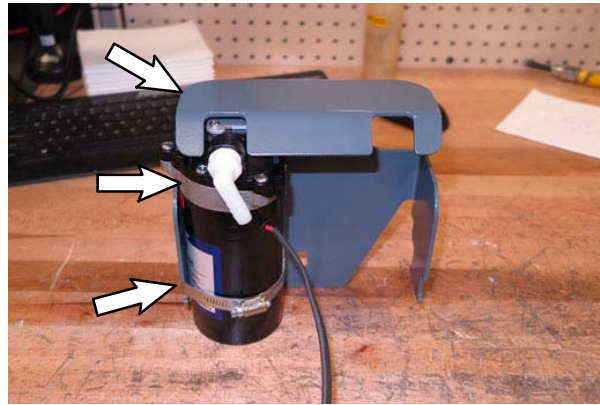


**FIG. 3**



**FIG. 4**

17. Use a clamp (27) to secure the ec- H2O pump (28) into the pump bracket (24). (Fig. 5 / Fig. 8)



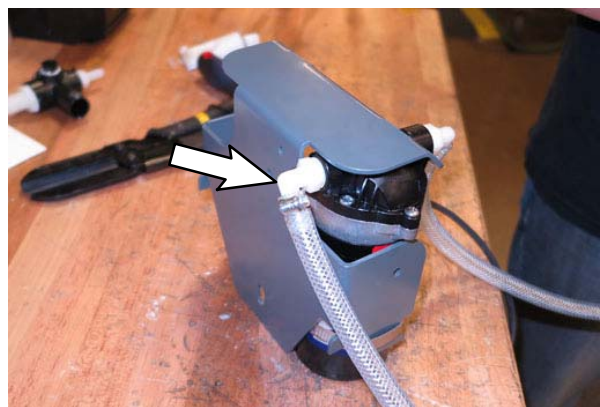
**FIG. 5**

18. Use one hose clamp (27) to connect a 34 in. (864 mm) 0.38 ID PVC hose to the ec- H2O pump (28) IN port. (Fig. 6 / Fig. 8)

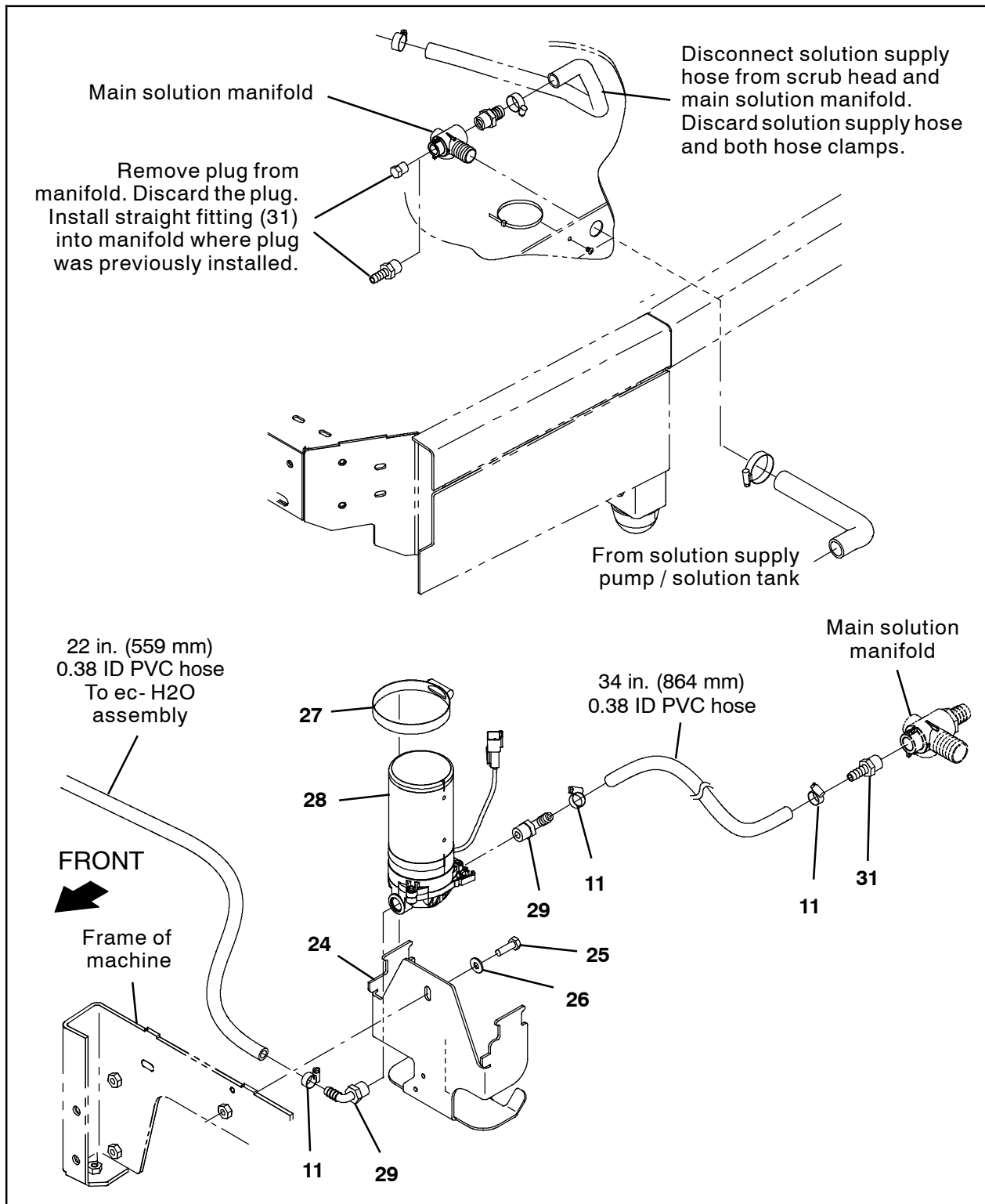


**FIG. 6**

19. Use one hose clamp (27) to connect a 22 in. (559 mm) 0.38 ID PVC hose onto the ec- H2O pump (28) OUT port. (Fig. 7 / Fig. 8)



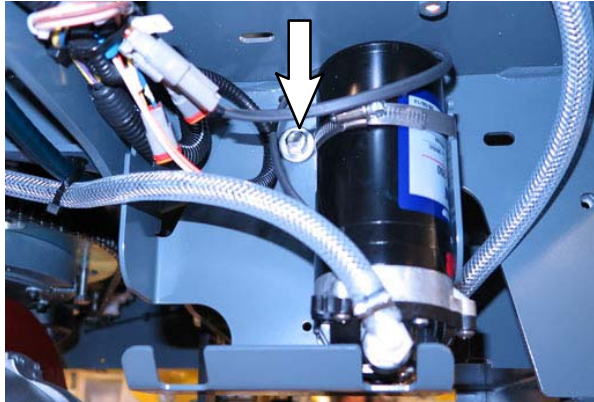
**FIG. 7**



**FIG. 8**

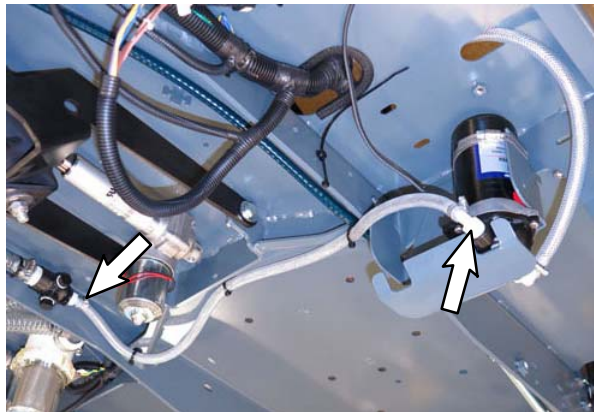
20. Remove the plug from the main solution manifold. Discard the plug. (Fig. 8)
21. Install the plastic straight fitting (31) onto the main solution manifold. (Fig. 8)

22. Use a M8 hex screw (25) and a flat washer (26) to install the ec- H2O pump (28) / pump bracket (24) onto the frame of the machine. (Fig. 9 / Fig. 8)

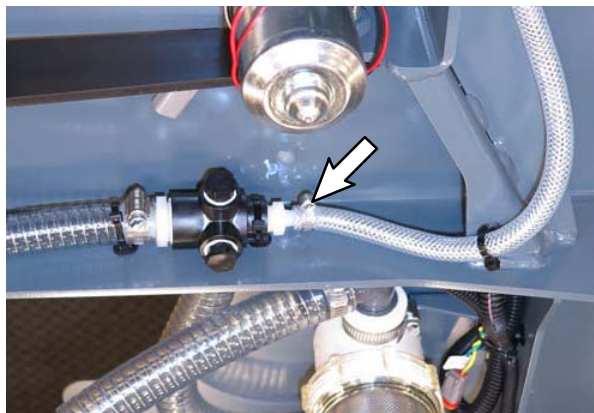


**FIG. 9**

23. Route the 34 in (864 mm) 0.38 ID PVC hose to the main solution manifold and use a hose clamp (31) to connect the PVC hose to the main solution manifold. (Fig. 10 / Fig. 11 / Fig. 6)



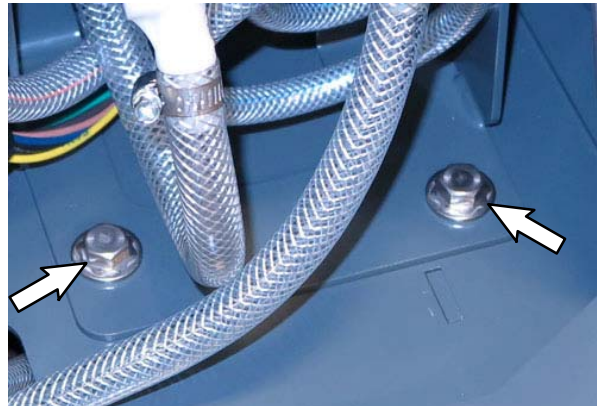
**FIG. 10**



**FIG. 11**

24. Connect the main wire harness to the ec- H2O pump (28). (Fig. 8 / Fig. 23)

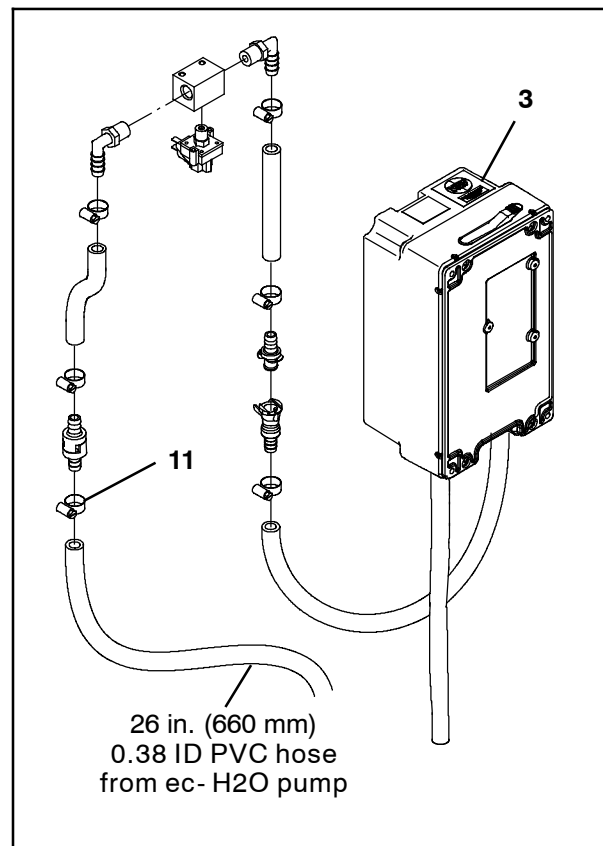
25. Use two SEMS M8 hex screws to install the ec- H2O assembly onto the machine. (Fig. 12)



**FIG. 12**

26. Connect the main wire harness to the ec- H2O assembly harness. (Fig. 21 / Fig. 22 / Fig. 24)

27. Use one hose clamp (11) to connect the 26 in. (660 mm) 0.38 ID PVC hose from the ec- H2O pump OUT port to the ec- H2O assembly. (Fig. 13)



**FIG. 13**

28. Use one hose clamp (11) to connect the elbow fitting (17) to the 37 in. (940 mm) 0.25 ID PVC hose - (25 in. (635 mm) 0.25 ID PVC hose for cylindrical scrub heads) - and connect the PVC hose to the ec- H2O assembly (3) OUT port hose. (Fig. 14)

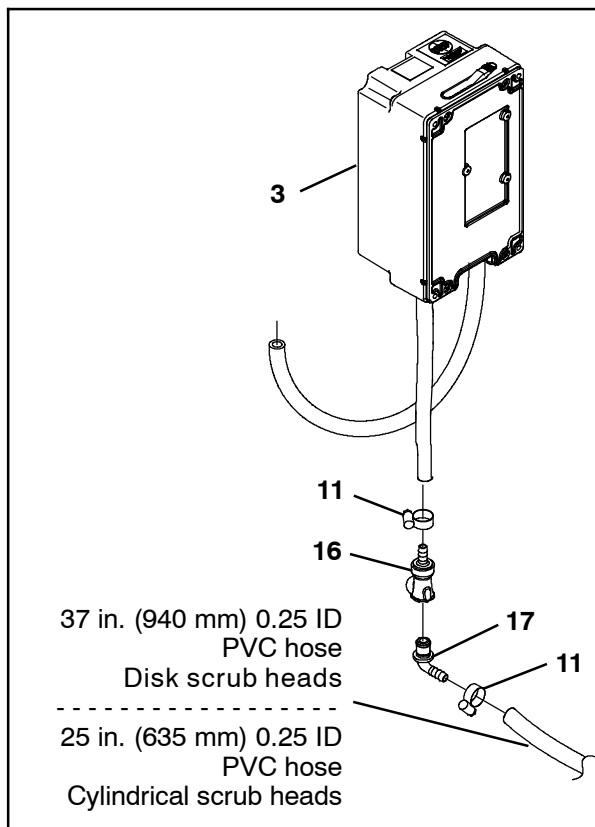


FIG. 14

29. Route the ec- H2O assembly OUT hose down through the hole in the frame of the machine and to the scrub head. (Fig. 14)

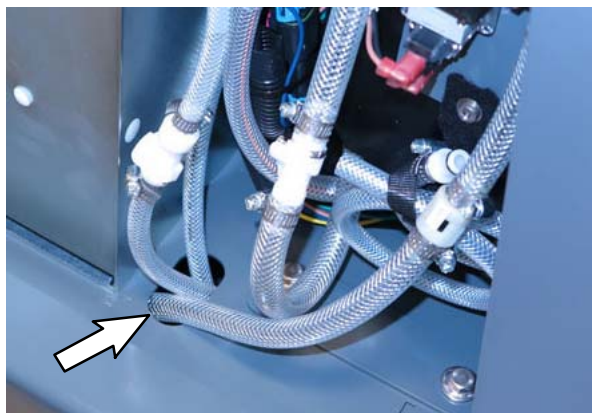


FIG. 15

30. **Machines with disk scrub heads:** Connect two 9.5 in. (241 mm) 0.25 ID PVC hoses to the t-fitting (40). (Fig. 18)

31. **Machines with disk scrub heads:** Install the items assembled in the previous step onto the scrub head. (Fig. 16)

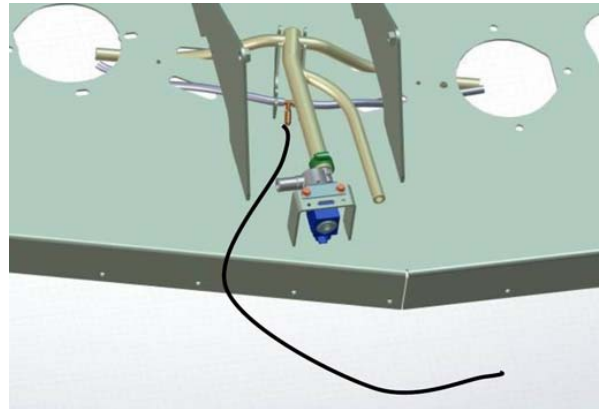


FIG. 16

32. **Machines with disk scrub heads:** Use two insulated cable clamps (39) to secure the two 9.5 in. (241 mm) 0.25 ID PVC hoses to the scrub head. (Fig. 17)

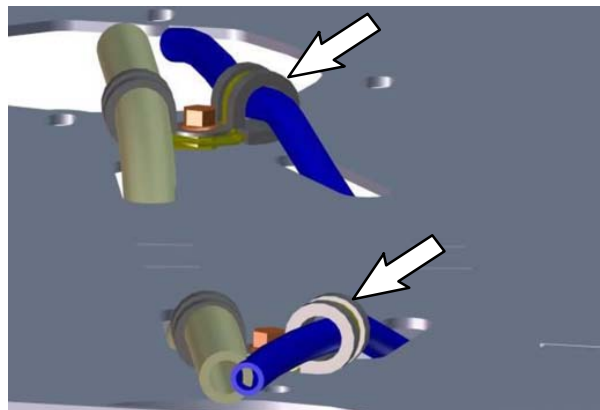


FIG. 17

33. **Machines with disk scrub heads:** Connect the 37 in. (940 mm) 0.25 ID PVC hose from ec- H2O OUT to the spray manifold. (Fig. 18)

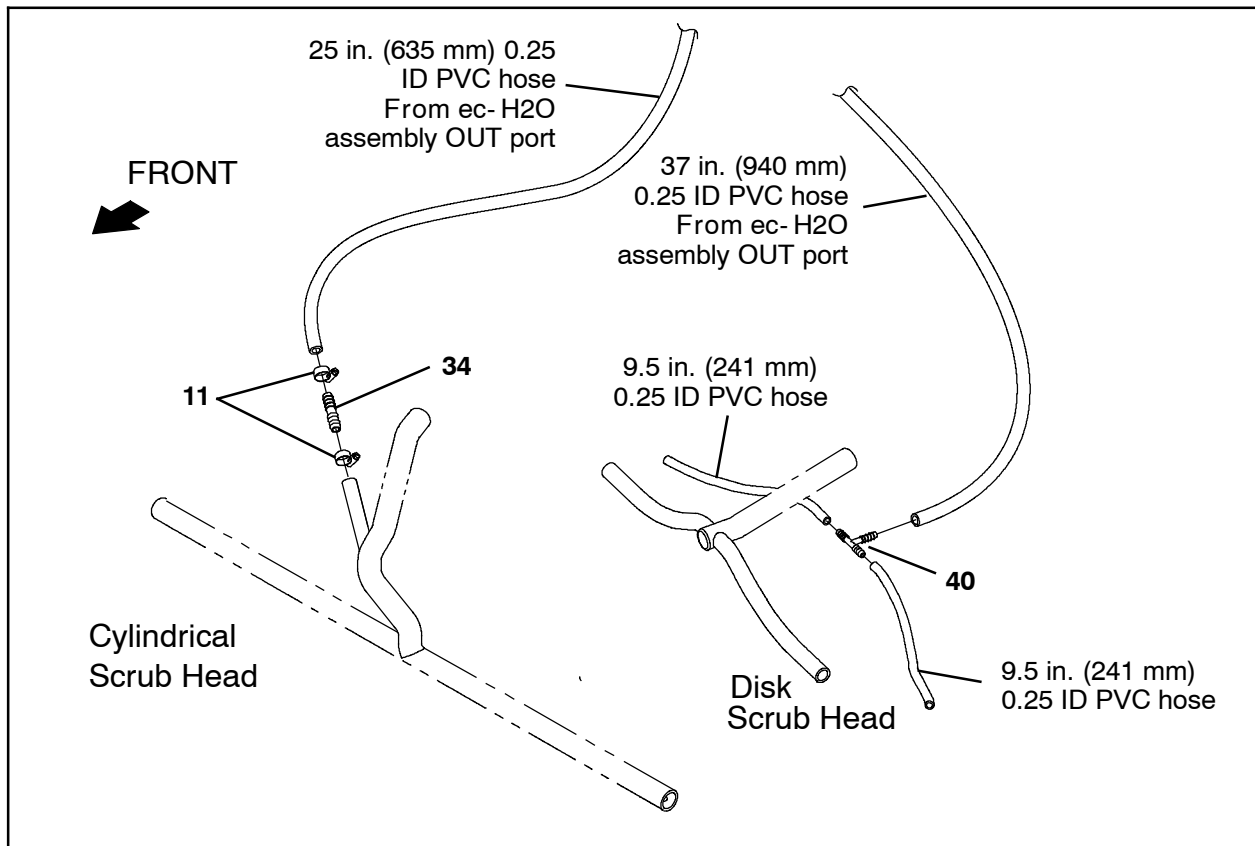


FIG. 18

34. **Machines with cylindrical scrub heads:** Cut the end from the spray manifold. (Fig. 19)

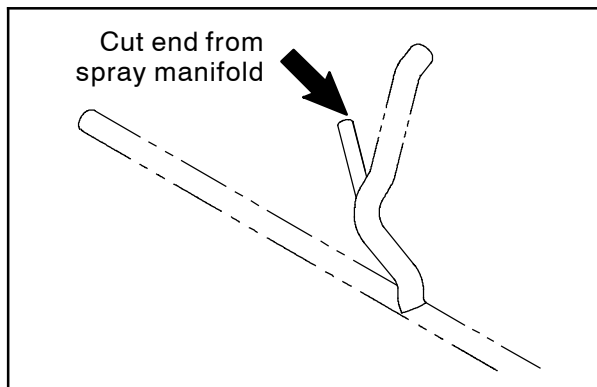


FIG. 19

35. **Machines with cylindrical scrub heads:** Use a hose clamp (11) to connect a straight fitting (34) to the spray manifold. (Fig. 18)
36. **Machines with cylindrical scrub heads:** Use a hose clamp (11) to connect the 25 in. (635 mm) PVC hose from ec- H2O OUT to the spray manifold. (Fig. 18)

37. Lift the machine from the jack stands, remove the jack stands from under the machine, and lower the machine to the floor.

38. Remove the SEMS M6 hex screws securing the electrical enclosure cover to the electrical enclosure and carefully remove the electrical enclosure cover from the electrical enclosure. Do not break any wire connections. Set the SEMS M6 hex screws aside. (Fig. 20)

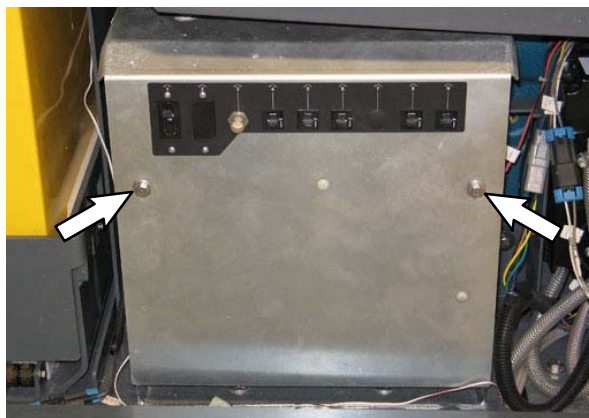
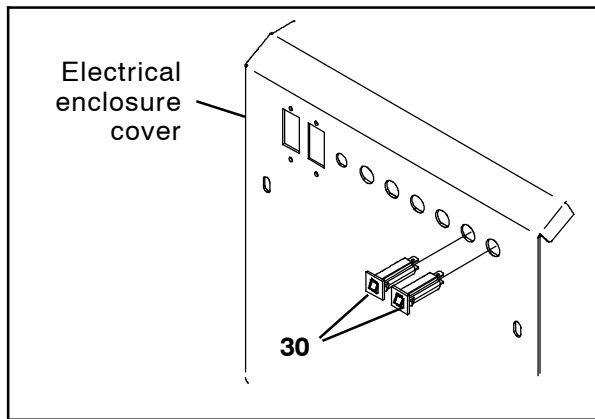


FIG. 20

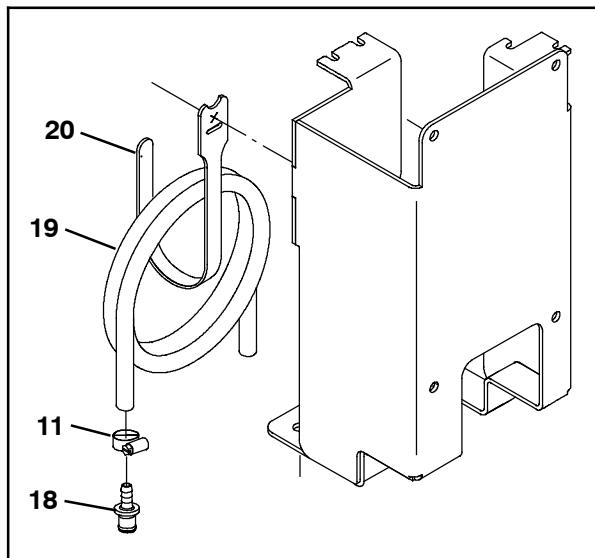


39. Install both 2.5- amp circuit breakers (30) into circuit breaker locations 8 and 9 in the electrical enclosure cover. (Fig. 21)



**FIG. 21**

40. Connect the main wire harness to the 2.5- amp circuit breakers (30). (Fig. 21 / Fig. 23)
41. Reinstall the electrical enclosure cover onto the electrical enclosure.
42. Use one hose clamp (11) to connect the straight plastic fitting (18) to the 24 in. (610 mm) PVC hose (19). (Fig. 22)



**FIG. 22**

43. Neatly loop the 24 in. (610 mm) PVC hose (19) and use the hook and loop fastener (20) to secure the hose to the ec- H2O assembly. (Fig. 22)

44. Reinstall the brushes and rear squeegee onto the machine.
45. Reconnect the battery cable to the machine.
46. Start and test the machine: Observe all ec- H2O hose / fitting connections for leaks. Watch LCD for ec- H2O warning codes. Refer to the Operator Manual for warning code information.

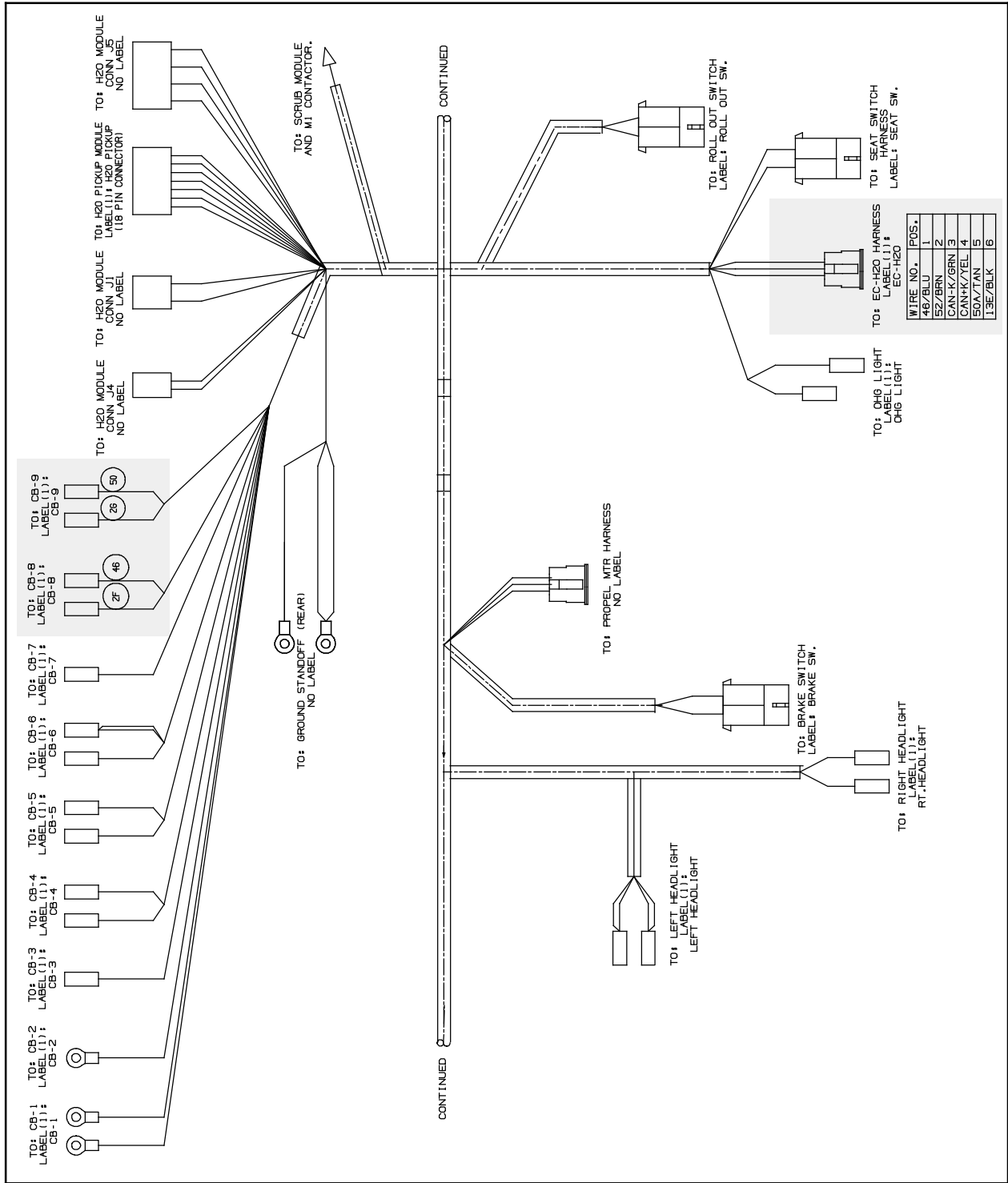


FIG. 23

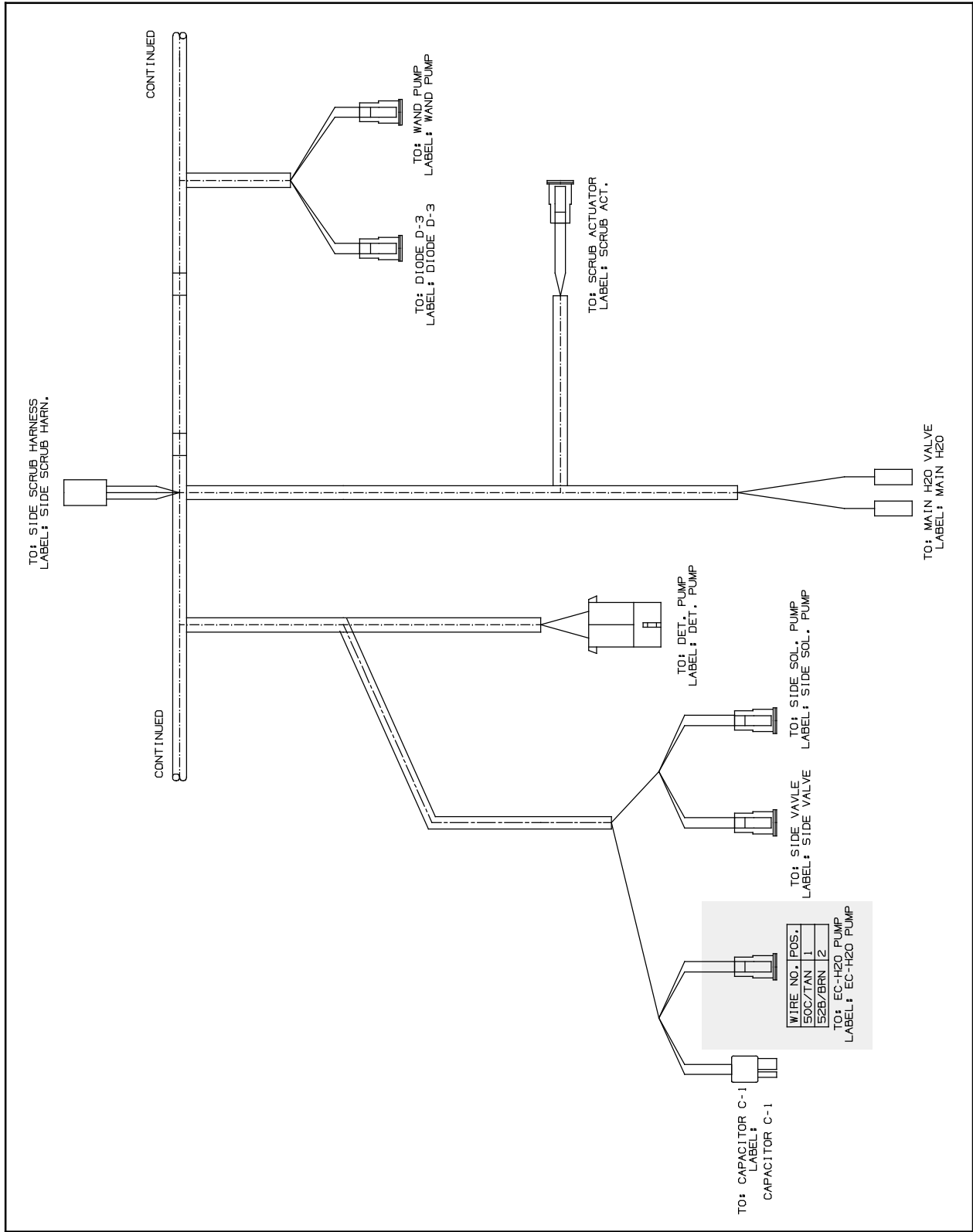
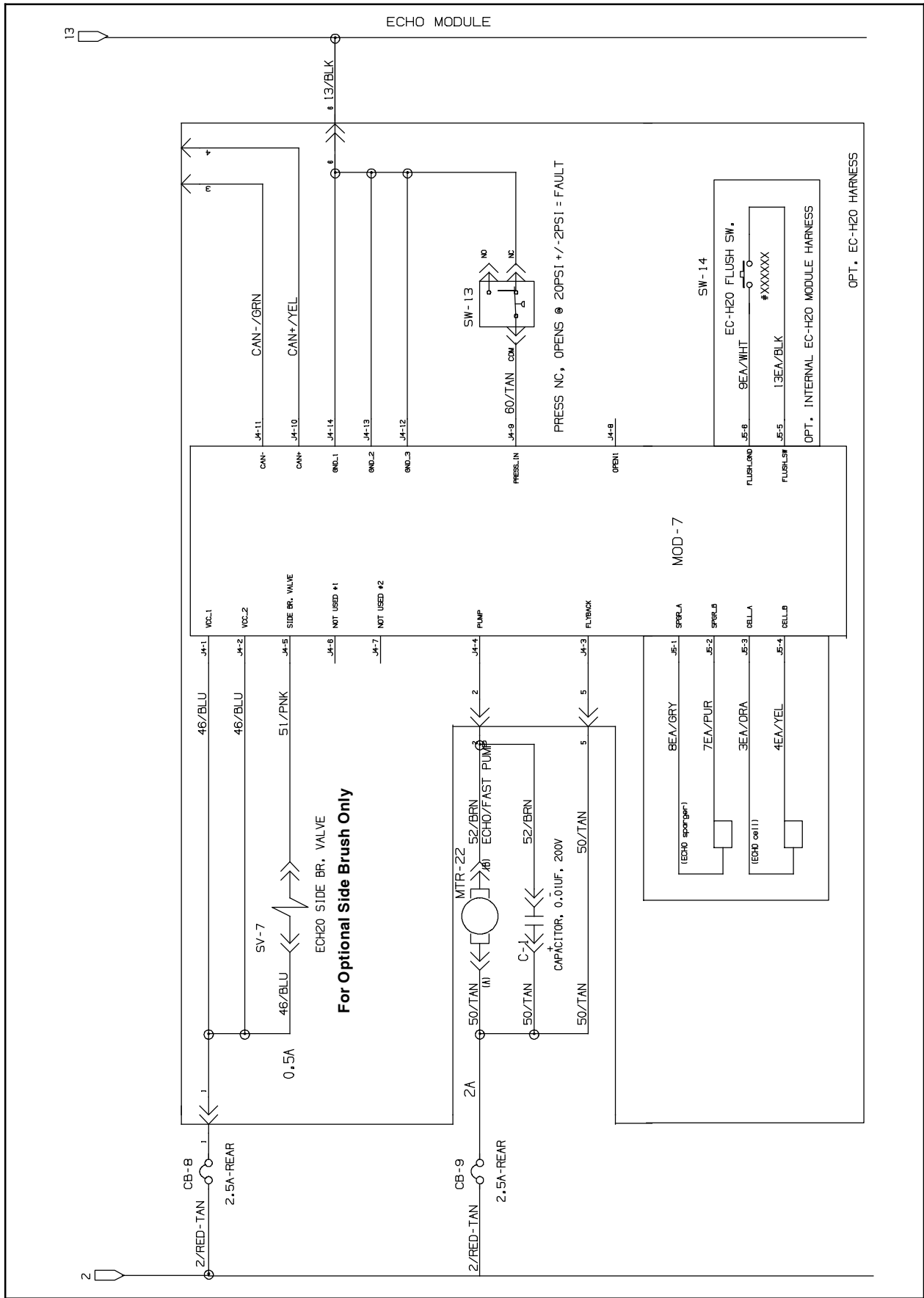


FIG. 24



**FIG. 25**

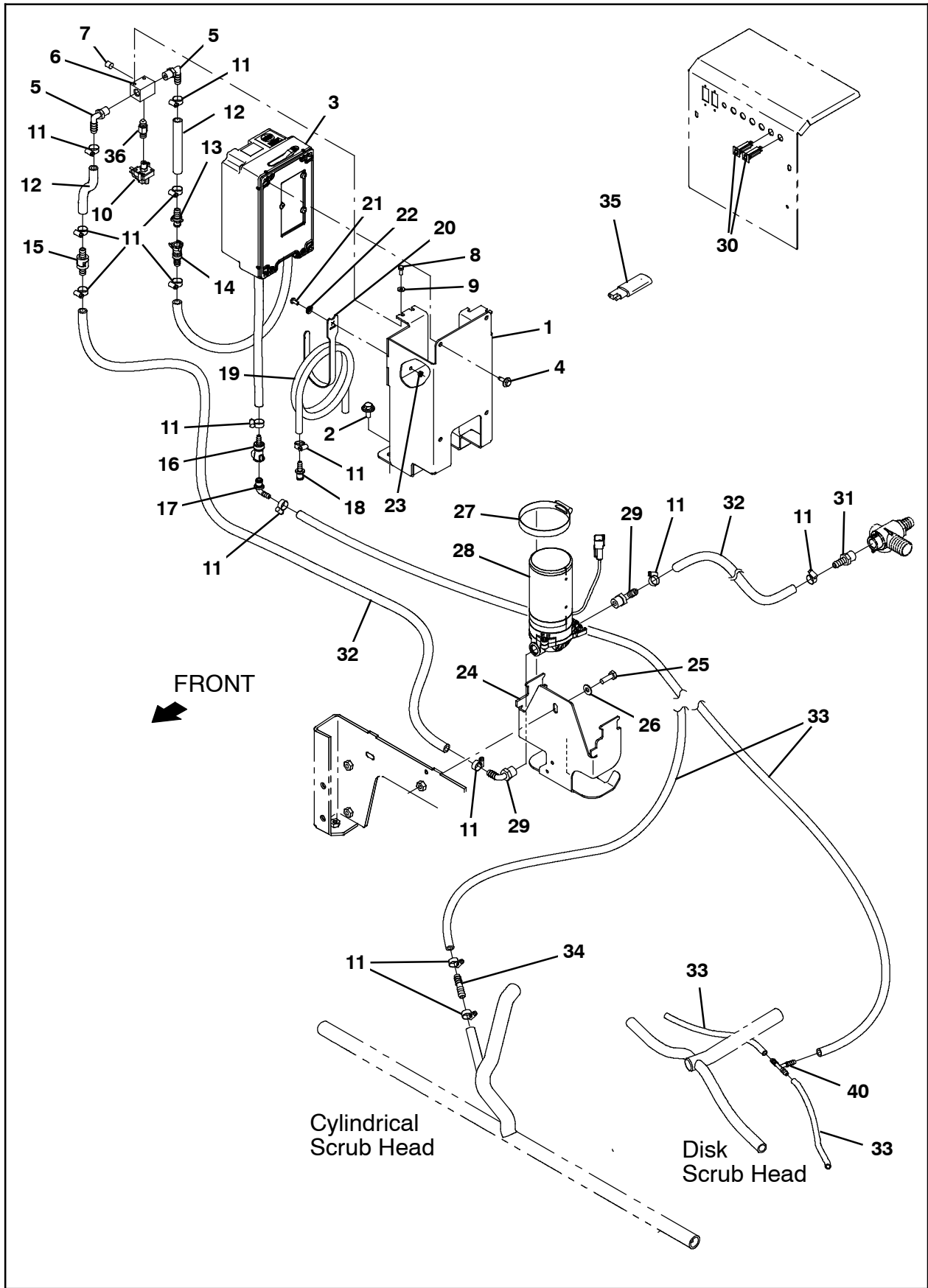
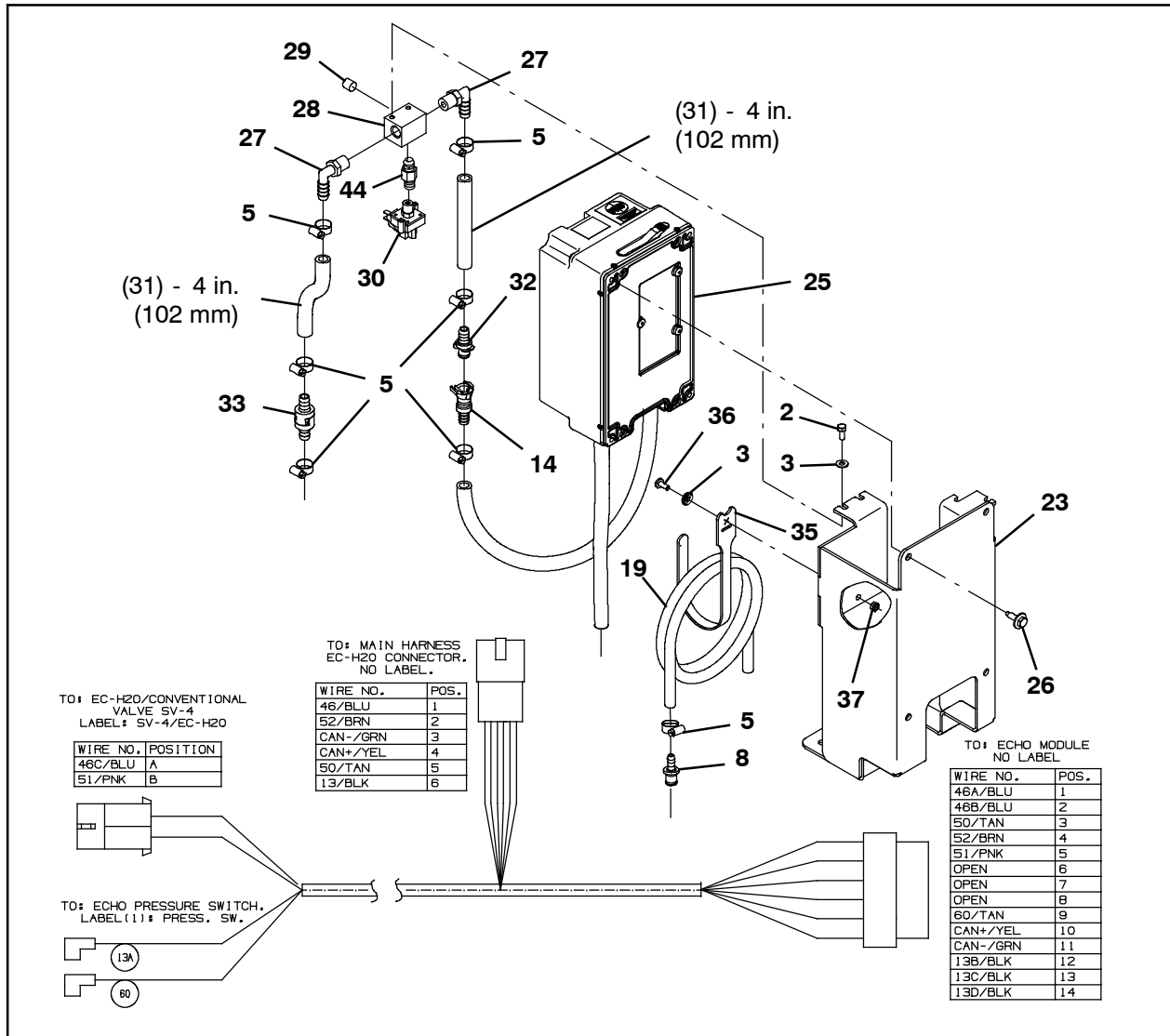


FIG. 26

**Bill Of Materials For ec- H2O Kit, DI [T17] - 9020085 / ec- H2O Kit, DI [T17] - 9015001**

Ref.	Tenant Part No.	Description	Qty.
1	1212443	Bracket Wldt, Mgt [T17 ec- H2O]	1
2	1020341	Screw, Hex, M8 X 1.25 X 20, SS, SEMS	2
3	9020224	Module, Water, FI w/Pkg (ec- H2O Mod E)	1
4	1040467	Screw, Hex, M6 X 1.00 X 20, 9.8, SEMS	4
5	57248	Fitting, Plstc, E90, Bm06/Pm04, Nyl	2
6	1059231	Fitting, Stl, Pm04/Pm02/Pm04/Pm02, Spcl	1
7	150208	Fitting, Brs, Str, Pm02, Plug [Skhd]	1
8	09738	Screw, Hex, M5 X 0.80 X 12, SS	2
9	01683	Washer, Flat, 10, SS	2
10	1055254	Switch, Press, 25psi, Pm02	1
11	43844	Clamp, Hose, Wormdrive, 0.25- 0.62d, .31w	15
12	376720	Hose, PVC, Brd, 0.38id 0.60od, Bulk, Clr (4 in. (102 mm) - each)	2
13	1203814	Fitting, Plstc, Str, Bm06, Cplg, Male	1
14	1203454	Fitting, Plstc, Str, Bm06, Cplg, Fem	1
15	1015455	Valve, Check, 0005psi Bm06/Bm06	1
16	1203996	Fitting, Plstc, Str, Bm05, Cplg, Fem	1
17	1204024	Fitting, Plstc, E90, Bm04 Cplg Male	1
18	1204338	Fitting, Plstc, Str, Bm04, Cplg, Male	1
19	1011387	Hose, PVC, Brd, 0.25ld, 0.45od, Bulk, Clr (24 in. (610 mm))	1
20	1067526	Fastener, 8.0l [Hook And Loop]	1
21	09200	Screw, Pan, Phl, M5 X 0.80 X 12, SS	1
22	01683	Washer, Flat, 10, SS	1
23	09739	Nut, Hex, Lock, M5 X 0.80, NI, SS	1
24	1206138	Bracket, Pump <b>(Kit 9020085 Only)</b>	1
24	1221952	Bracket, Pump <b>(Kit 9015001 Only)</b>	1
25	09010	Screw, Hex, M8 X 1.25 X 25, SS	1
26	32490	Washer, Flat, 0.25, Std	1
27	43555	Clamp, Hose, Wormdrive, 0.25- 0.62D, .31W	1
28	1200328	Pump, Soltn, Ele, 36vdc, 60psi	1
29	1005630	Fitting, Plstc, E90, Bm06/Pm06, Nyl	2
30	1064184	Circuit Breaker, 02.5a, Resettable	2
31	150538	Fitting, Plstc, Str, Bm06/Pm06	1
32	1014976	Hose, PVC, Brd, 0.38id 0.60od, Bulk, Clr	1
33	1011387	Hose, PVC, Brd, 0.25id 0.45od, Bulk, Clr	1
34	1039557	Fitting, Plstc, Str, Bm04/Bm06	1
35	1040868	Capacitor, Plug [.01 Uf, 200v]	1
36	1062403	Fitting, Brs, Snubber, Pm02/Pf02	1
37	1069671	Harness, Ele [ec- H2O, T12]	1
38	54333	Clamp, Hose, Wormdrive, 0.31- 0.88D, .31W	4
39	1016354	Clamp, Cable, SS, 0.50d X 0.50w [Insul]	2
40	150713	Fitting, Plstc, Tee, Bm04/Bm04/Bm04	1

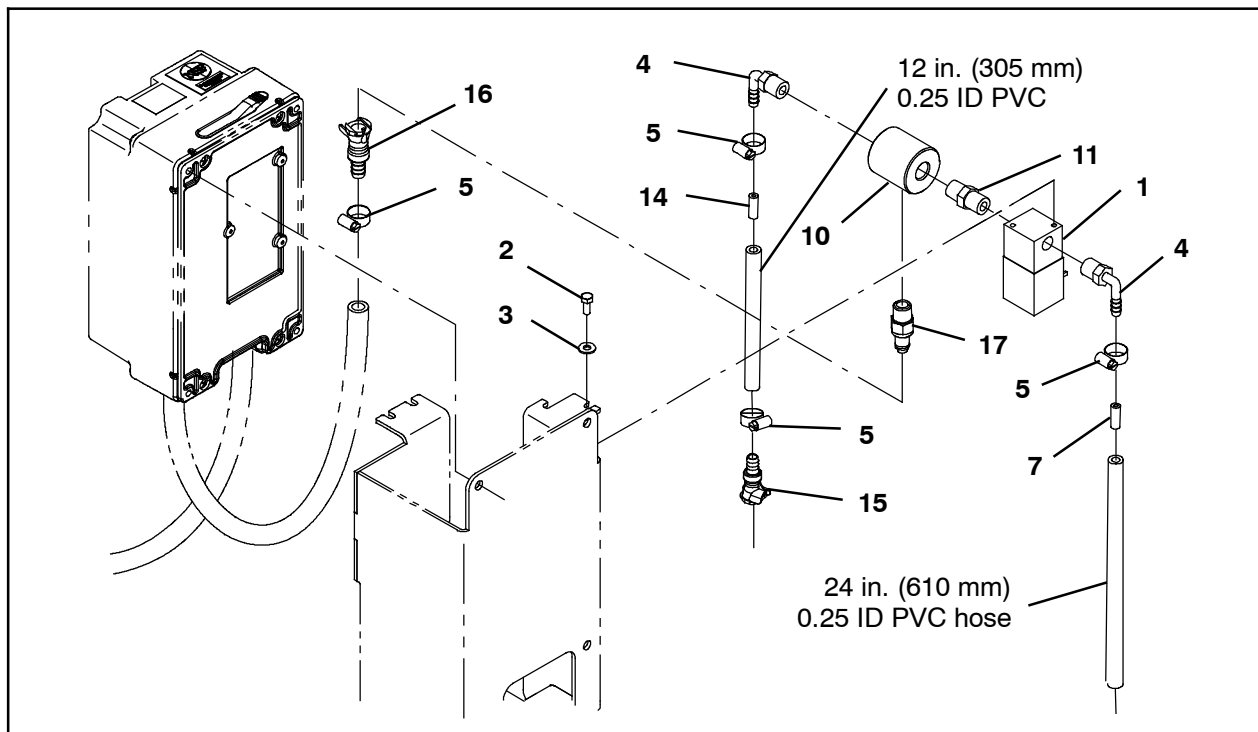
**INSTALLATION: MACHINES WITH OPTIONAL  
SCRUBBING SIDE BRUSH:**



**FIG. 27**

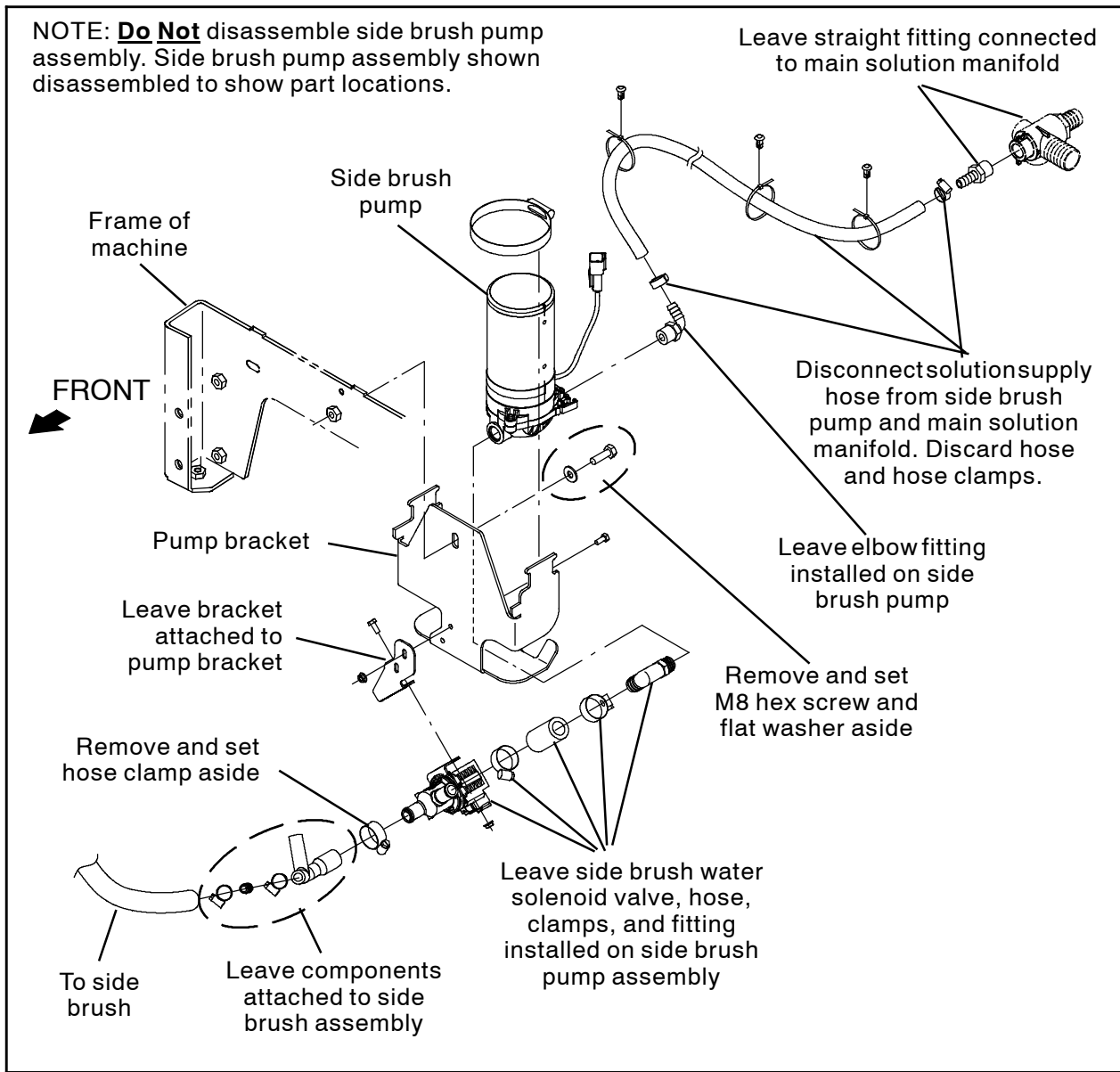
1. Connect the ec-H2O harness (43) to the ec-H2O module (25). (Fig. 27)
2. Use one M5 pan screw (36), one flat washer (3), and one M5 hex nut (37) to install the hook and loop fastener (35) onto the ec-H2O mounting bracket (23). (Fig. 27)
3. Use four M6 SEMS hex screws (26) to install the ec-H2O module (25) into the ec-H2O mounting bracket (23). (Fig. 27)
4. Thread the brass straight fitting (29) into the steel fitting (28). (Fig. 27)
5. Thread the brass snubber fitting (44) into the steel fitting (28). (Fig. 27)
6. Thread two plastic elbow fittings (27) into the steel fitting (28). (Fig. 27)
7. Thread the pressure switch (30) onto the brass snubber fitting (44) / steel fitting (28). (Fig. 27)
8. Use one hose clamp (5) to connect a 4 in. (101.6 mm) PVC hose (XX) to each plastic elbow fitting (27) on the steel fitting (28). (Fig. 27)
9. Use one hose clamp (5) to connect the check valve (33) to the 4 in. (101.6 mm) PVC hose (XX). (Fig. 27)
10. Use one hose clamp (5) to connect the plastic straight fitting (32) to the other 4 in. (101.6 mm) PVC hose (XX). (Fig. 27)

11. Use two M5 hex screws (2) and two flat washers (3) to install the check valve assembly assembled in the previous steps onto the ec- H2O mounting bracket (23). (Fig. 27)
12. Use one hose clamp (5) to connect the plastic straight fitting (14) to the hose from the ec- H2O module (25) IN port. (Fig. 27)
13. Use one hose clamp (5) to connect the plastic straight fitting (32) to the hose from the ec- H2O module (3) IN port. (Fig. 27)
14. Connect the hose from the ec- H2O module (25) IN port to the plastic straight fitting (32) on the check valve assembly. (Fig. 27)
15. Connect the ec- H2O harness (43) to the pressure switch (30). (Fig. 28)
16. Thread plastic fitting (17) into plastic fitting (10). (Fig. 28)
17. Thread plastic straight fitting (11) into the water solenoid valve (1). (Fig. 28)
18. Thread plastic fitting (17) onto the plastic straight fitting (11) in the water solenoid valve (1). (Fig. 28)
19. Thread two elbow fittings (4) into the solenoid assembly assembled in the previous several steps. (Fig. 28)
20. Use two M5 hex screws (2) and two flat washers (3) to install the solenoid assembly onto the ec- H2O module assembly. (Fig. 28)
21. Insert the white reducer fitting (14) into a 12 in. (305 mm) 0.25 ID PVC hose and use one hose clamp (5) to connect the 12 in. (305 mm) 0.25 ID PVC hose to the elbow fitting (4) installed on the plastic fitting (10). (Fig. 28)
22. Use one hose clamp (5) to connect a straight plastic coupling connector (16) onto the ec- H2O module (3) OUT port hose. (Fig. 28)
23. Connect the coupling connector (16) on the ec- H2O module OUT port hose to the plastic fitting (17). (Fig. 28)
24. Insert the black reducer fitting (7) into the 24 in. (610 mm) 0.25 ID PVC hose and use a hose clamp (5) to connect the 24 in. (610 mm) 0.25 ID PVC hose to the elbow fitting (4) installed on the water solenoid valve (1). (Fig. 28)
25. Use one hose clamp (5) to connect the plastic straight fitting (15) to the 4 in. (102 mm) PVC hose (13). (Fig. 28)



**FIG. 28**

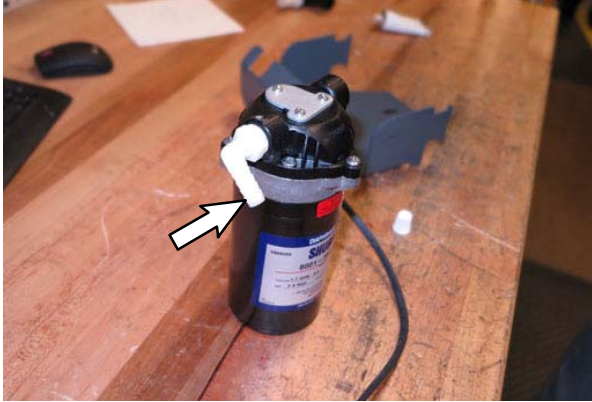




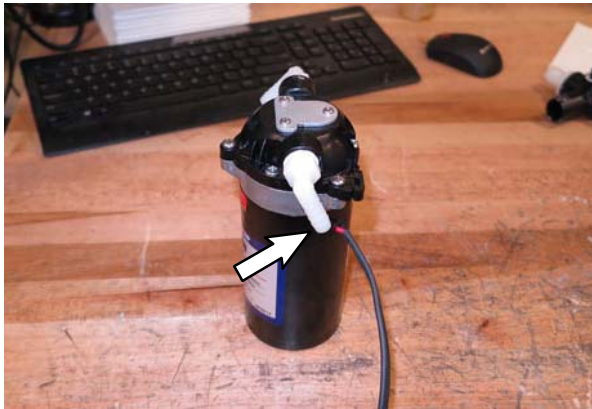
**FIG. 29**

26. Disconnect the main wire harness from the side brush pump. (Fig. 29)
27. Disconnect the solution supply hose from the side brush pump and the main solution manifold. Discard the hose and both hose clamps. (Fig. 29)
28. Loosen the M8 hex screw securing the side brush pump assembly to the frame of the machine. (Fig. 29)
29. Loosen the clamp securing the side brush water solenoid valve to the side brush manifold and disconnect the side brush manifold from the side brush water solenoid valve. (Fig. 29)
30. Remove the side brush pump assembly from the frame of the machine. Set the M8 hex screw, flat washer, and hose clamp aside. (Fig. 29)

31. Install the elbow fittings (18) onto the ec-H2O pump (39). Note orientation of both fittings. Both fittings must be oriented as shown. (Fig. 30 / Fig. 31)

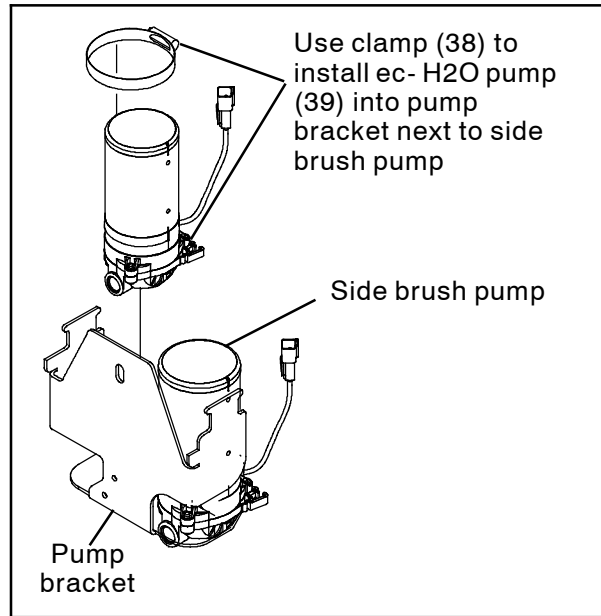


**FIG. 30**

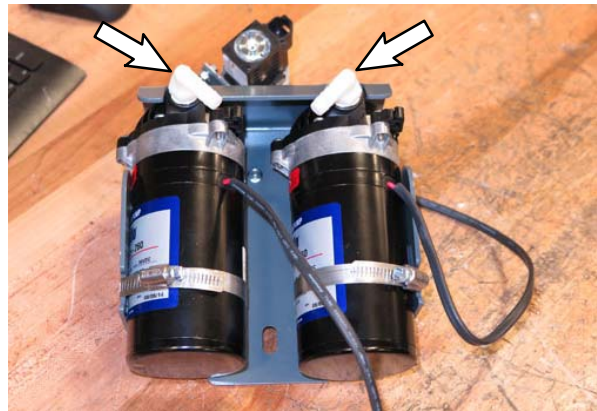


**FIG. 31**

32. Use a clamp (38) to install the ec-H2O pump (39) next to the side brush pump in the pump bracket. Note orientation of fittings on the ec-H2O pump and the side brush pump. (Fig. 32 / Fig. 33)

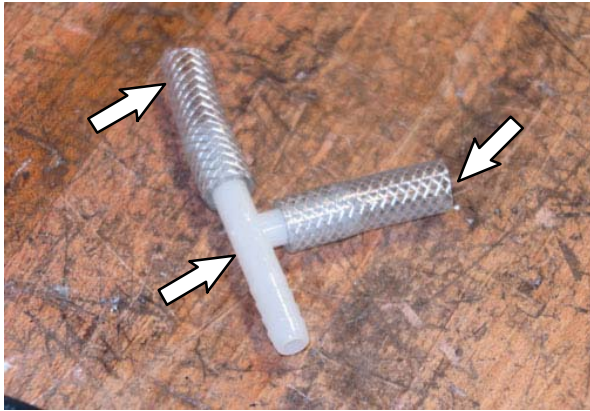


**FIG. 32**



**FIG. 33**

33. Connect two sections of 2 in. (51 mm) 0.38 ID PVC hose to the t-fitting (21). (Fig. 34 / Fig. 39)



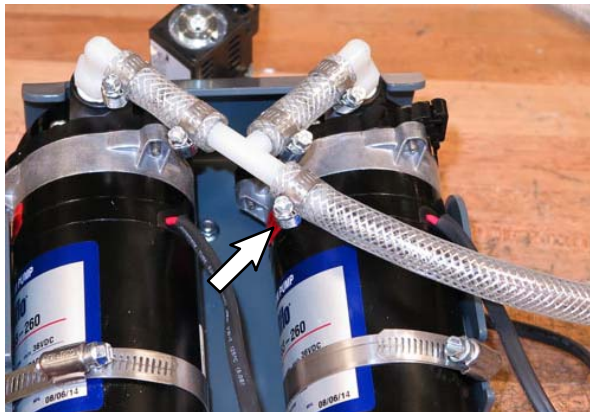
**FIG. 34**

34. Slide two hose clamps (5) onto each 2 in. (51 mm) 0.38 ID PVC hose installed on the t-fitting (21) and use the hose clamps to connect the hoses to the side brush pump and ec- H2O pump (39). (Fig. 35 / Fig. 39)



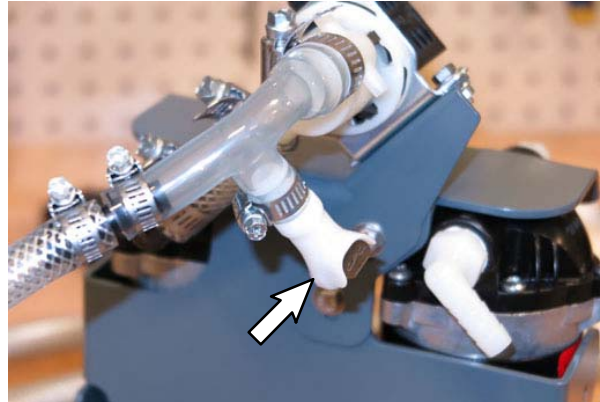
**FIG. 35**

35. Use one hose clamp (5) to connect a 28.5 in. (724 mm) 0.38 ID PVC hose to the t-fitting (21). (Fig. 36 / Fig. 39)



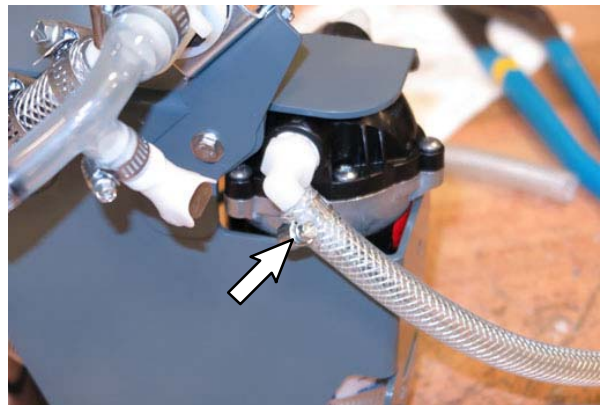
**FIG. 36**

36. Cut end from the side brush manifold and use one hose clamp (5) to connect the plastic straight fitting (9) to the side brush manifold. (Fig. 37)

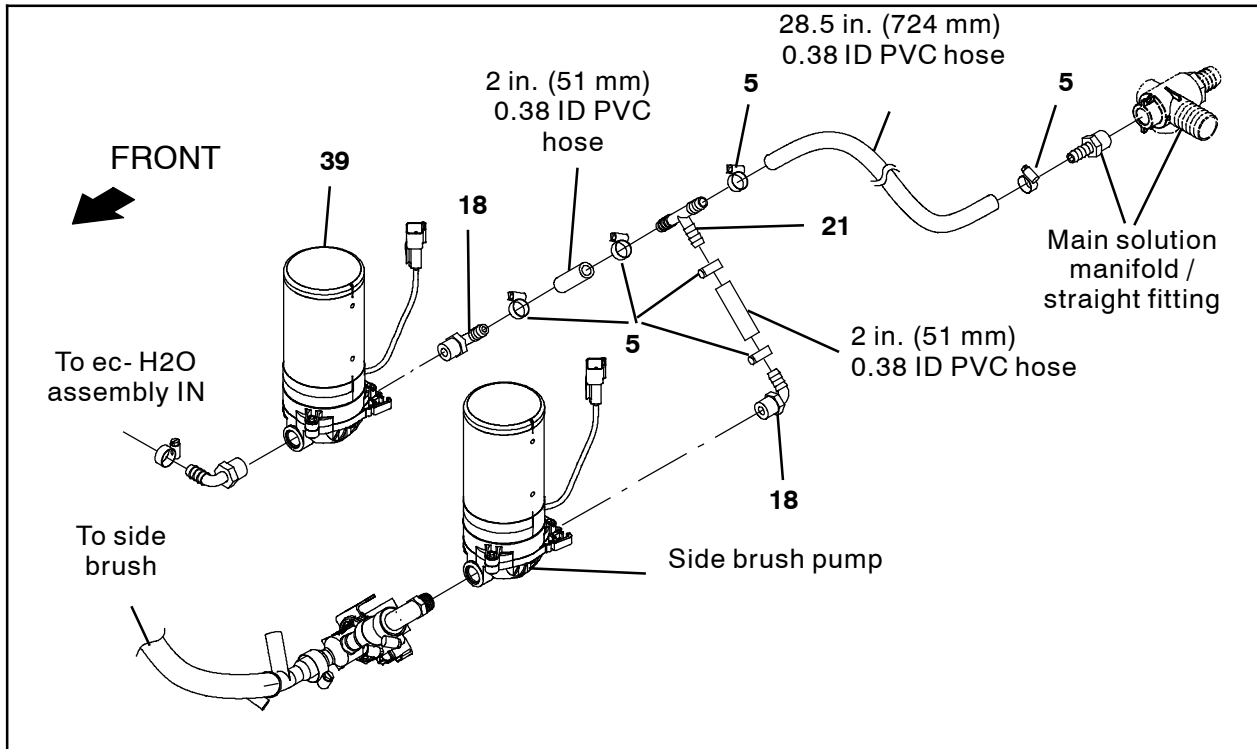


**FIG. 37**

37. Use a hose clamp (5) to connect 26 in. (660 mm) 0.38 ID PVC hose to the ec- H2O pump. (Fig. 38)



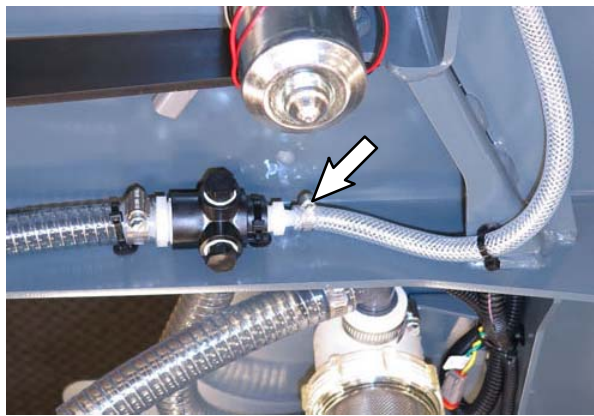
**FIG. 38**



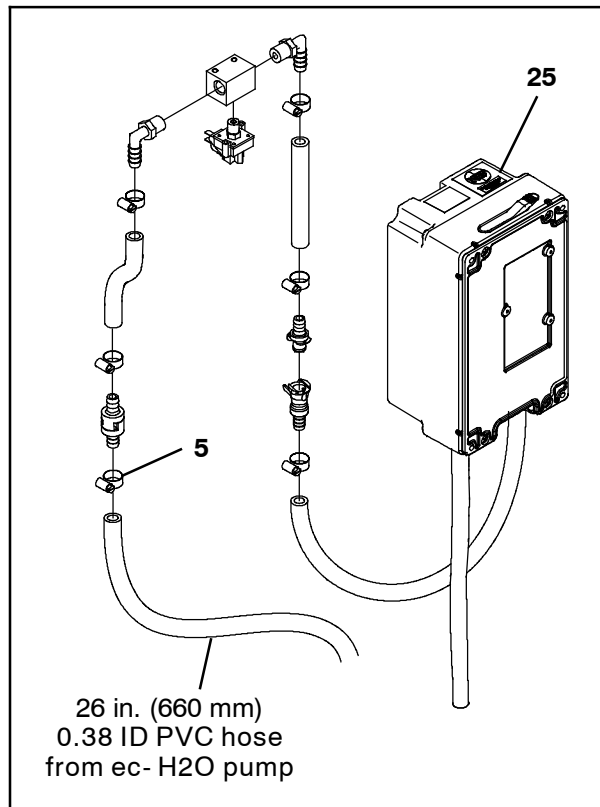
**FIG. 39**

- 38. Reinstall the pump bracket onto the frame of the machine.
- 39. Route the 28.5 in. (724 mm) 0.38 ID PVC hose attached to the t-fitting (21) to the main manifold and use one hose clamp (5) to connect the 28.5 in. (724 mm) 0.38 ID PVC hose to the main manifold. (Fig. 39 / Fig. 40)

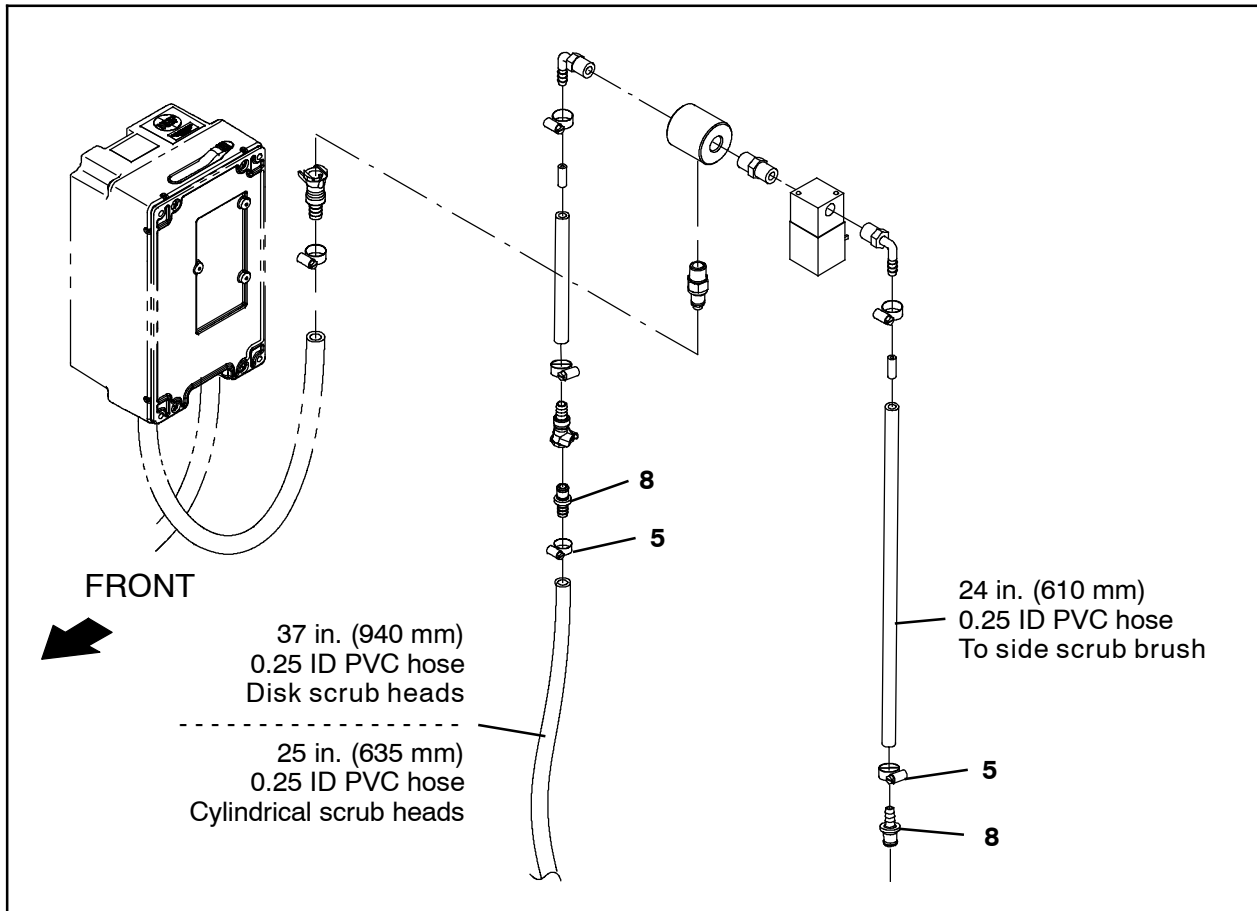
- 40. Use a hose clamp (5) to connect a 26 in. (660 mm) 0.38 ID PVC hose from the ec-H2O pump to the ec-H2O assembly. (Fig. 39 / Fig. 41)



**FIG. 40**



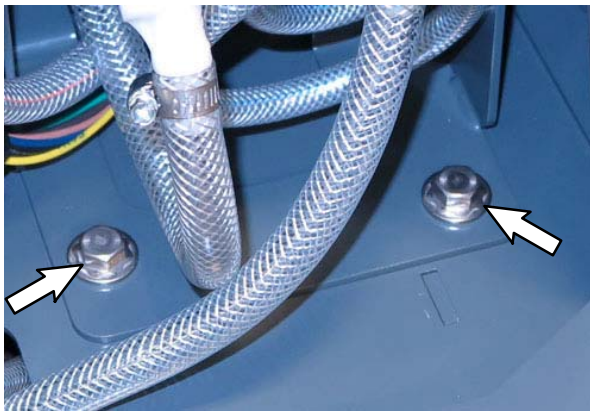
**FIG. 41**



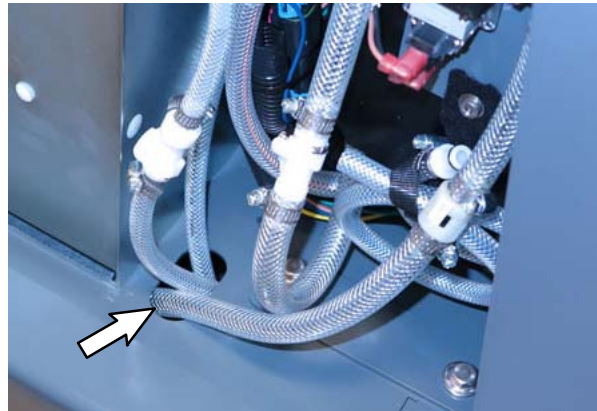
**FIG. 42**

41. Use two SEMS M8 hex screws (24) to install the ec- H2O assembly onto the machine. (Fig. 43)

43. Route the ec- H2O assembly hoses down through the hole in the frame of the machine. (Fig. 44)



**FIG. 43**



**FIG. 44**

42. Connect the main wire harness to the ec- H2O assembly harness. (Fig. 49 / Fig. 50)

44. **Machines with disk scrub heads:** Connect two 9.5 in. (241 mm) 0.25 ID PVC hoses to t-fitting (46). (Fig. 47)

45. **Machines with disk scrub heads:** Install the items assembled in the previous step onto the scrub head. (Fig. 45)

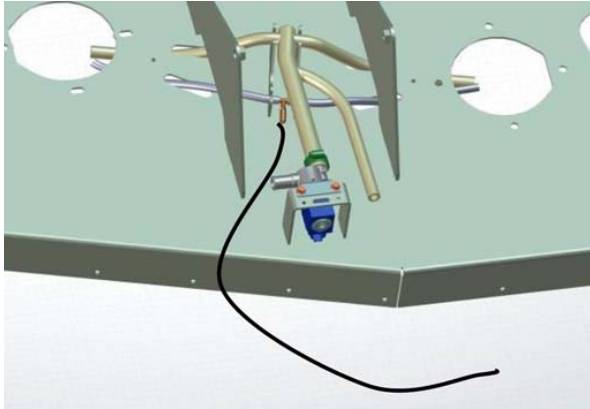


FIG. 45

46. **Machines with disk scrub heads:** Use two insulated cable clamps (45) to secure the two 9.5 in. (241 mm) 0.25 ID PVC hoses to the scrub head. (Fig. 46)

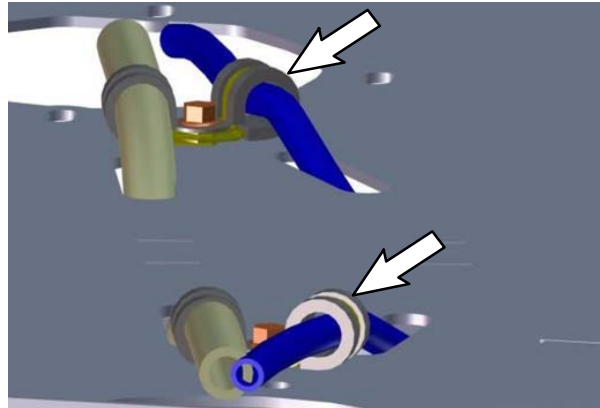


FIG. 46

47. **Machines with disk scrub heads:** Connect the 37 in. (940 mm) 0.25 ID PVC hose from ec- H2O OUT to the spray manifold. (Fig. 47)

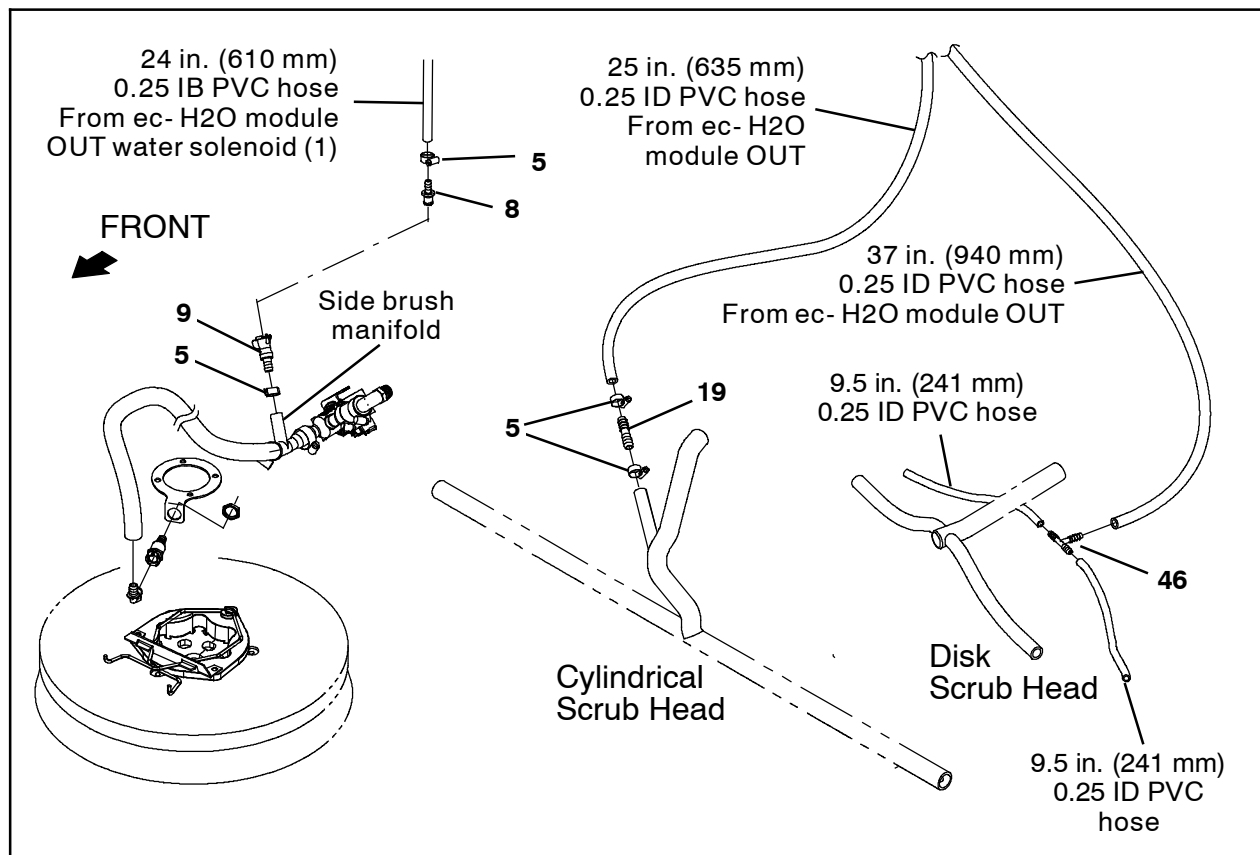
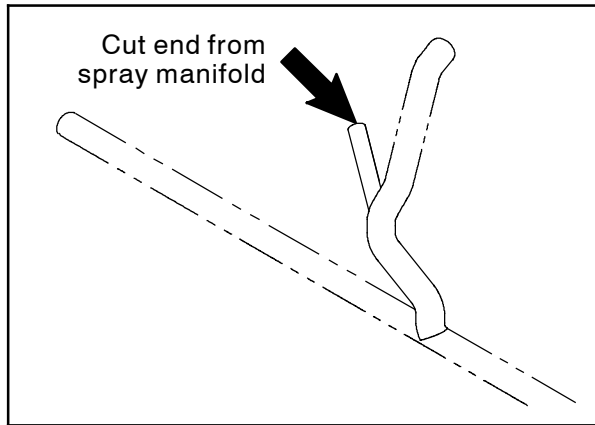


FIG. 47

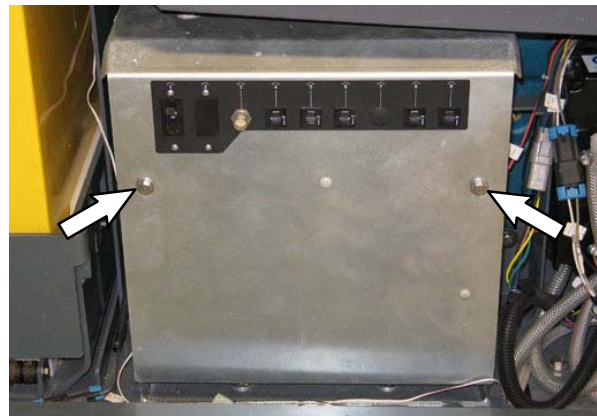
48. **Machines with cylindrical scrub heads:**  
Cut the end from the spray manifold. (Fig. 47 / Fig. 48)



**FIG. 48**

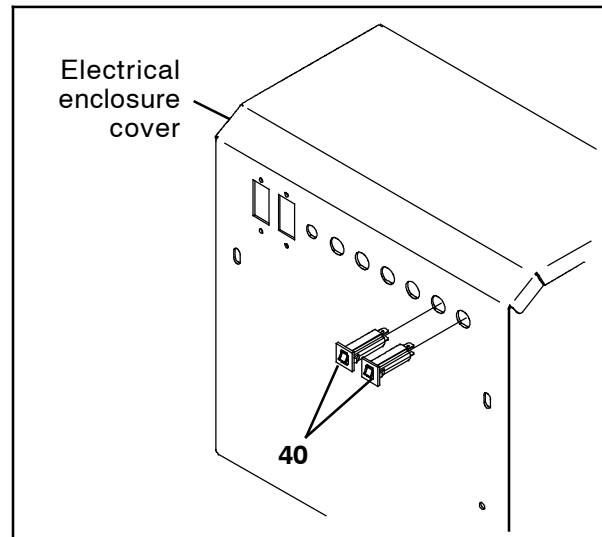
49. **Machines with cylindrical scrub heads:**  
Use a hose clamp (5) to connect a straight fitting (19) to the 25 in. (635 mm) 0.25 ID PVC hose. (Fig. 47)
50. **Machines with cylindrical scrub heads:**  
Use a hose clamp (5) to connect the 25 in. (635 mm) 0.25 ID PVC hose from ec-H<sub>2</sub>O OUT to the spray manifold. (Fig. 47)
51. Connect the 24 in. (610 mm) 0.25 ID PVC hose from the ec-H<sub>2</sub>O module OUT water solenoid (1) to the side brush manifold. (Fig. 47)
52. Lift the machine from the jack stands, remove the jack stands from under the machine, and lower the machine to the floor.

53. Remove the SEMS M6 hex screws securing the electrical enclosure cover to the electrical enclosure and carefully remove the electrical enclosure cover from the electrical enclosure. Do not break any wire connections. Set the SEMS M6 hex screws aside. (Fig. 49)



**FIG. 49**

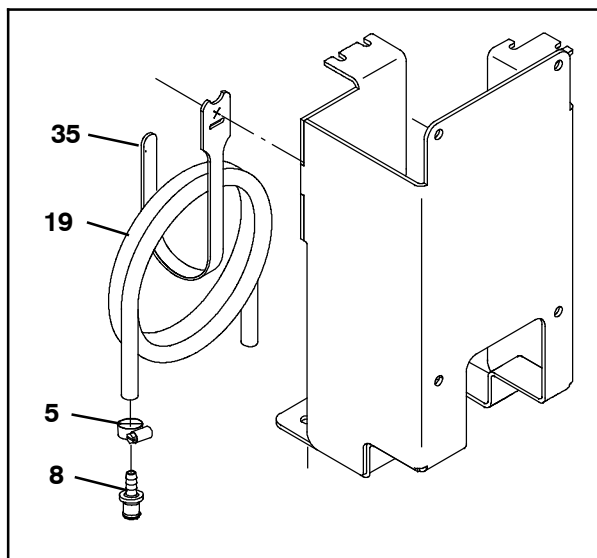
54. Install both 2.5-amp circuit breakers (40) into circuit breaker locations 8 and 9 in the electrical enclosure cover. (Fig. 50)



**FIG. 50**

55. Connect the main wire harness to the 2.5-amp circuit breakers (40). (Fig. 50 / Fig. 52)
56. Reinstall the electrical enclosure cover onto the electrical enclosure. (Fig. 49)

57. Use one hose clamp (5) to connect the straight plastic fitting (8) to the 24 in. (914 mm) PVC hose (19). (Fig. 51)



**FIG. 51**

58. Neatly loop the 24 in. (914 mm) PVC hose (19) and use the hook and loop fastener (35) to secure the hose to the ec- H2O assembly. (Fig. 51)
59. Reinstall the brushes and rear squeegee onto the machine.
60. Reconnect the battery cable to the machine.
61. Start and test the machine: Observe all ec- H2O hose / fitting connections for leaks. Watch LCD for ec- H2O warning codes. Refer to the Operator Manual for warning code information.



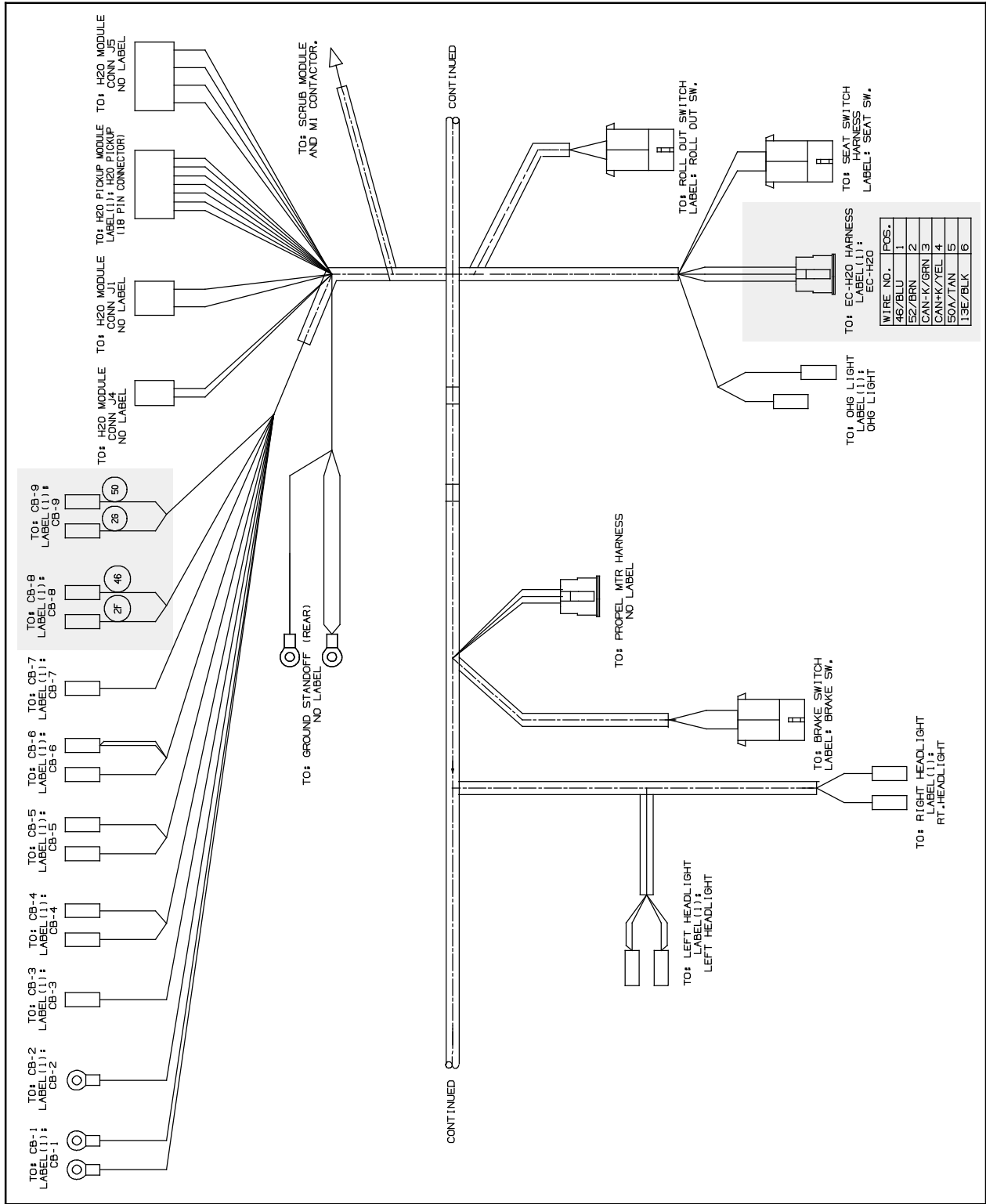


FIG. 52

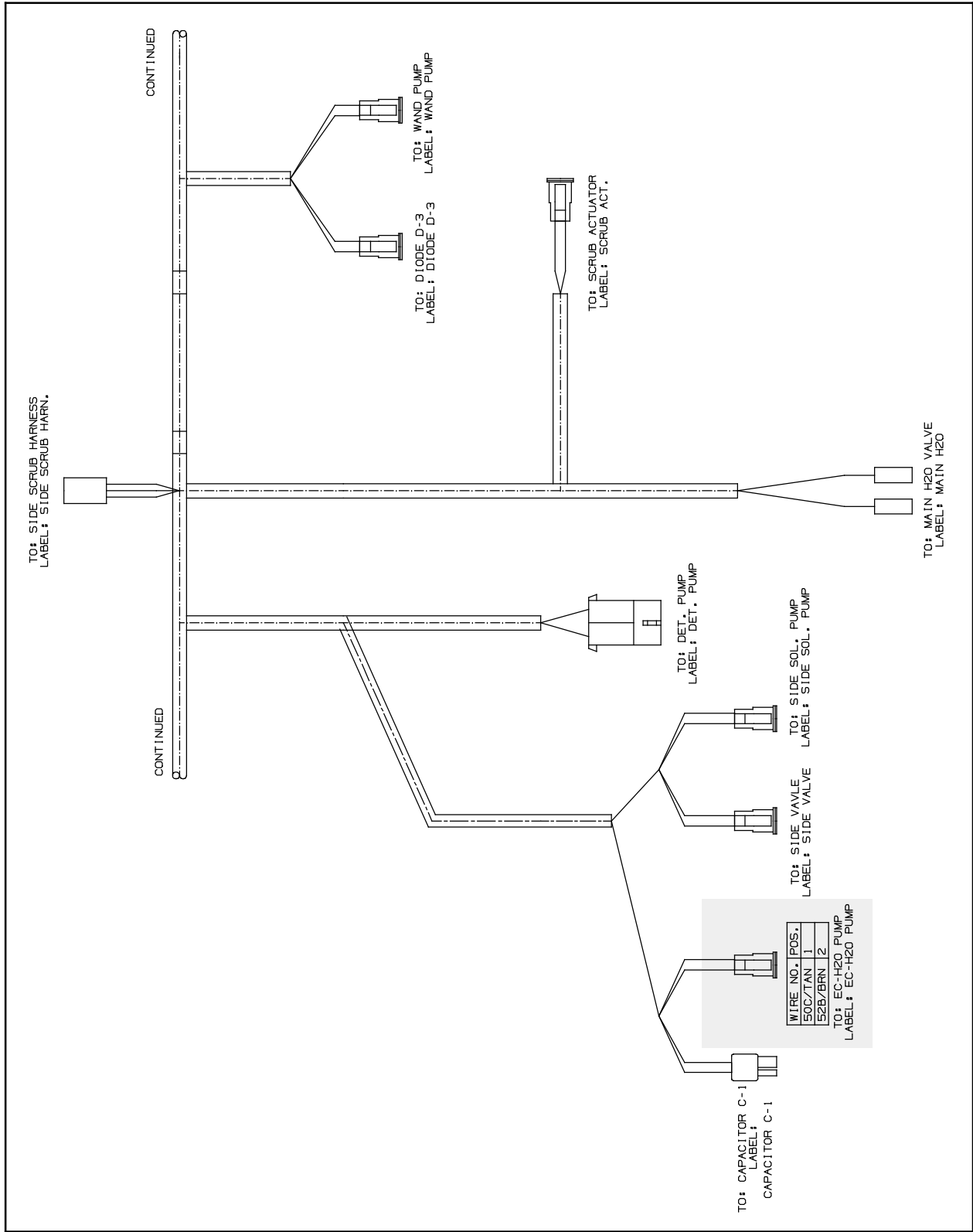


FIG. 53

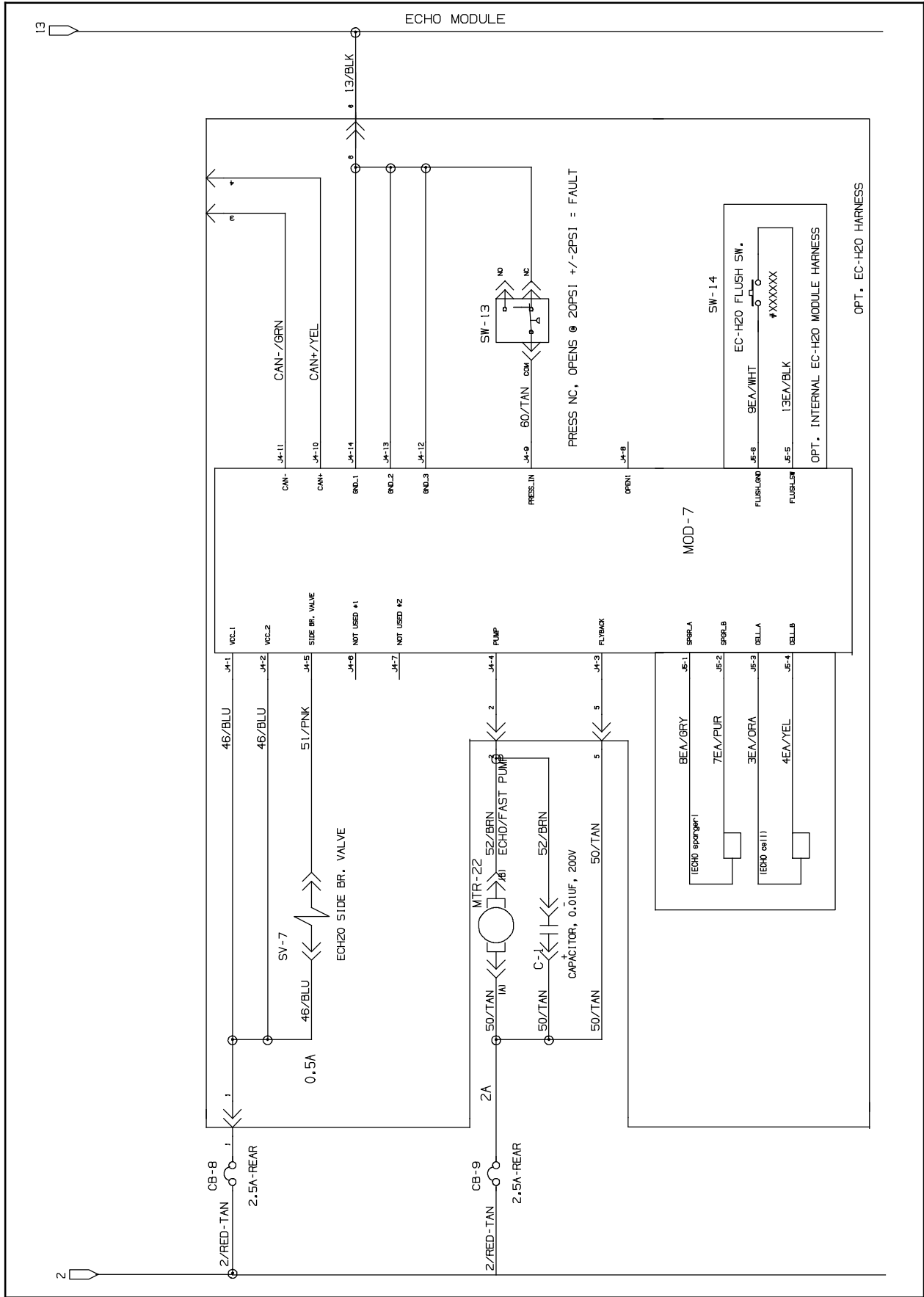


FIG. 54

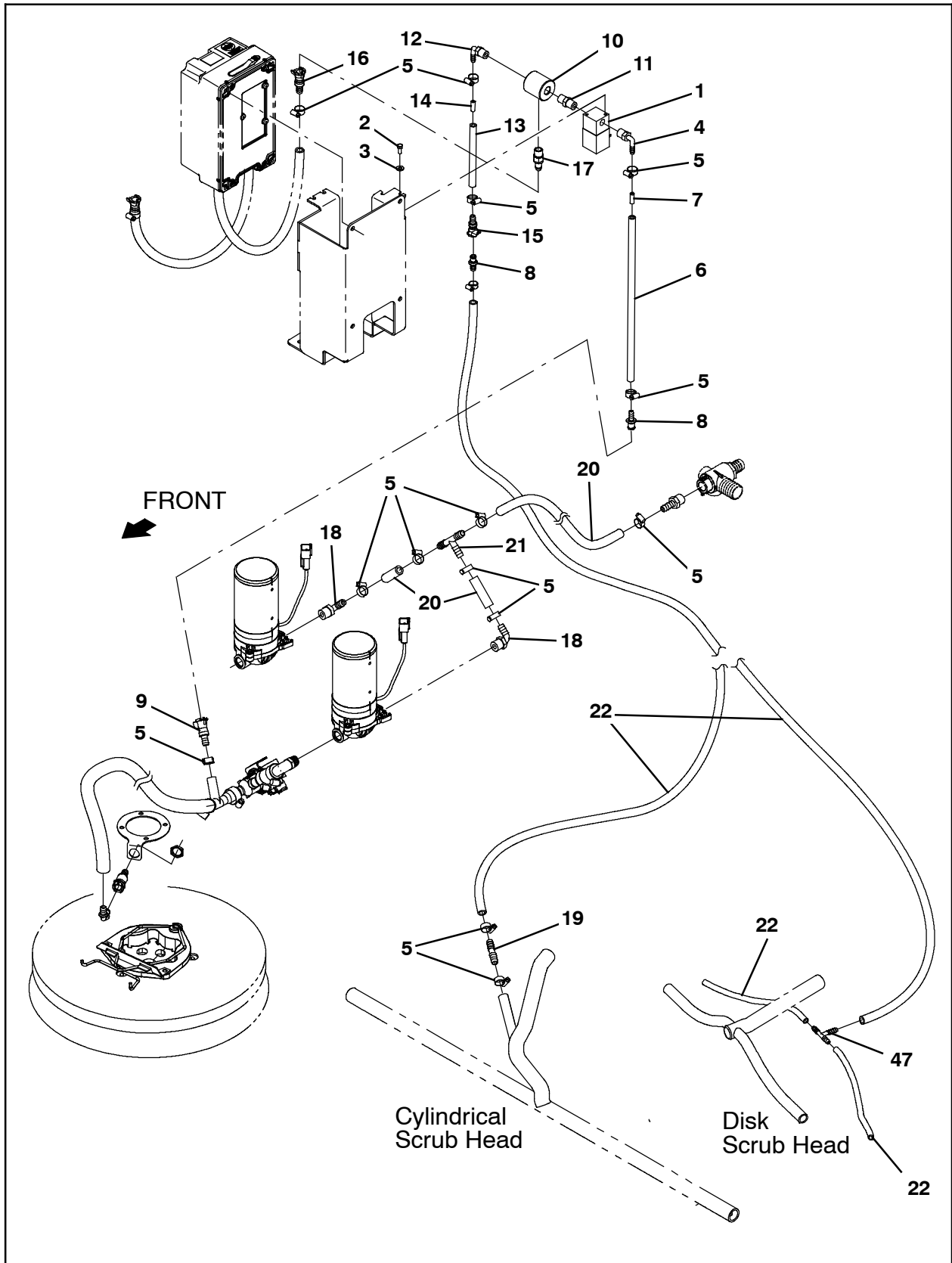


FIG. 55

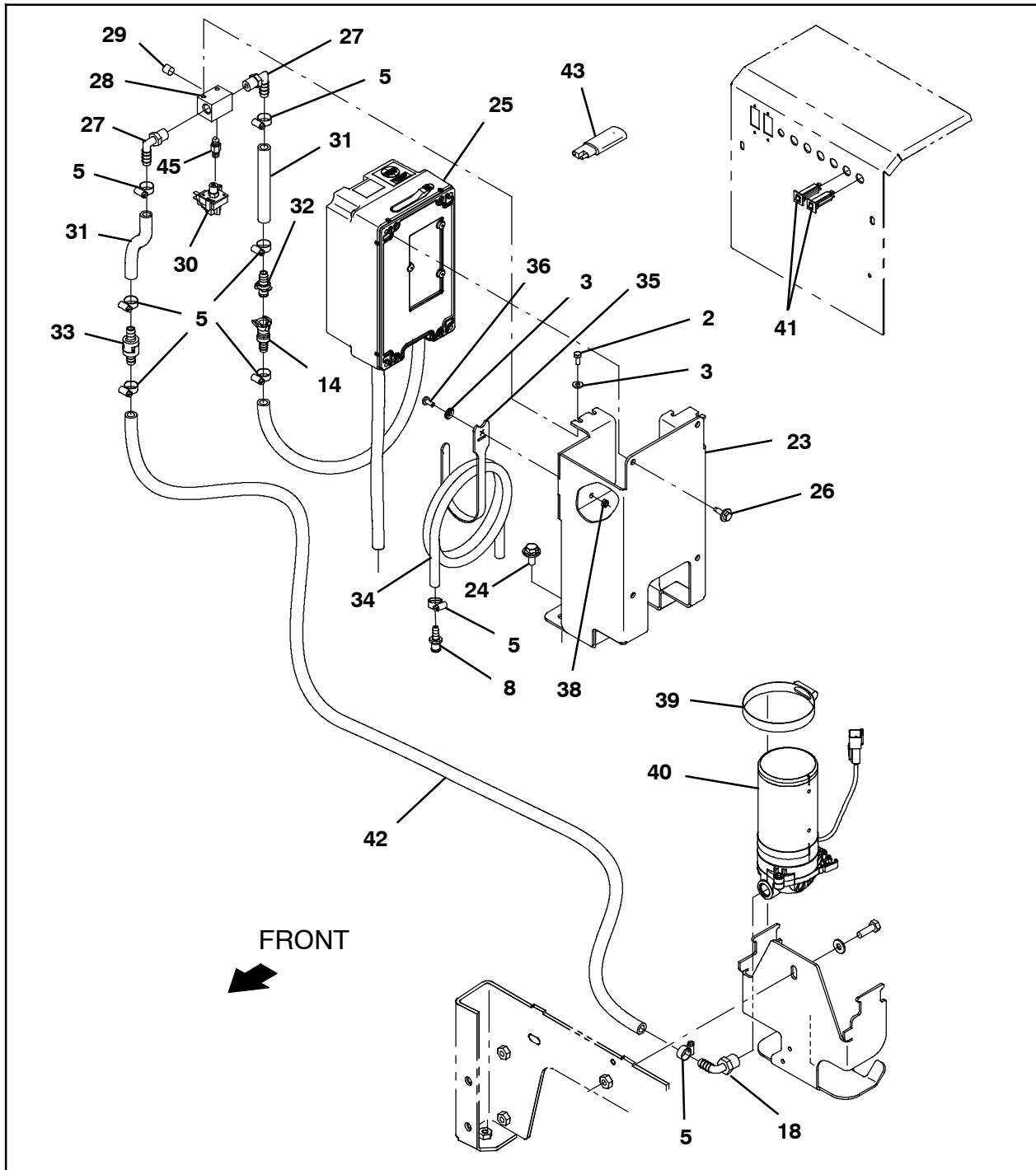


FIG. 56

Bill Of Materials For ec- H2O Kit, w/ Side Brush, DI [T17] - 9020086

Ref.	Tennant Part No.	Description	Qty.
1	1028581	Valve, Water, Solenoid, 36vdc 6.0mm Pf04	1
2	09738	Screw, Hex, M5 X 0.80 X 12, SS	4
3	01683	Washer, Flat, 10, SS	5
4	1011170	Fitting, Plstc, E90, Bm04/Pm04, Nyl	2
5	43844	Clamp, Hose, Wormdrive, 0.25- 0.62d, .31w	21

**Bill Of Materials For ec- H2O Kit, w/ Side Brush, DI [T17] - 9020086**

<b>Ref.</b>	<b>Tennant Part No.</b>	<b>Description</b>	<b>Qty.</b>
6	1011387	Hose, PVC, Brd, 0.25id 0.45od, Bulk, Clr	1
7	1200467	Fitting, Plstc, Rst	1
8	1204338	Fitting, Plstc, Str, Bm04, Cplg, Male	2
9	1203454	Fitting, Plstc, Str, Bm06, Cplg, Fem	2
10	1206303	Fitting, Plstc, Pf04/Pf04/Pf04	1
11	1052010	Fitting, Plstc, Str, Pm04/Pm04	1
12	1011170	Fitting, Plstc, E90, Bm04/Pm04, Nyl	1
13	1011387	Hose, PVC, Brd, 0.25ld, 0.45od, Bulk, Clr (41 in.)	1
14	1201441	Fitting, Plstc, Rst, Main Head	1
15	1002898	Fitting, Plstc, Str, Bm04, Cplg, Fem[TCO]	1
16	1203996	Fitting, Plstc, Str, Bm05, Cplg, Fem	1
17	1002899	Fitting, Plstc, Str, Pm04, Cplg, Mal[TCO]	1
18	1005630	Fitting, Plstc, E90, Bm06/Pm06, Nyl	2
19	1039557	Fitting, Plstc, Str, Bm04/Bm06	1
20	1011387	Hose, PVC, Brd, 0.25ld, 0.45od, Bulk, Clr (4 in. (102 mm))	1
21	87173	Fitting, Plstc, Tee, Bm06/Bm06/Bm06	1
22	54333	Clamp, Hose, Wormdrive, , 0.31- 0.88D, .31W	6
23	1212443	Bracket Wldt, Mgt [T17 ec- H2O]	1
24	1020341	Screw, Hex, M8 X 1.25 X 20, SS, SEMS	2
25	9020224	Module, Water, FI w/Pkg (ec- H2O Mod E)	1
26	1040467	Screw, Hex, M6 X 1.00 X 20, 9.8, SEMS	4
27	57248	Fitting, Plstc, E90, Bm06/Pm04, Nyl	2
28	1059231	Fitting, Stl, Pm04/Pm02/Pm04/Pm02, Spcl	1
29	150208	Fitting, Brs, Str, Pm02, Plug [Skhd]	1
30	1055254	Switch, Press, 25psi, Pm02	1
31	376720	Hose, PVC, Brd, 0.38id 0.60od, Bulk, Clr (4 in. (102 mm) - each)	2
32	1203814	Fitting, Plstc, Str, Bm06, Cplg, Male	1
33	1015455	Valve, Check, 0005psi Bm06/Bm06	1
34	1011387	Hose, PVC, Brd, 0.25ld, 0.45od, Bulk, Clr (24 in. (610 mm))	1
35	1067526	Fastener, 8.0l [Hook And Loop]	1
36	09200	Screw, Pan, Phl, M5 X 0.80 X 12, SS	1
37	09739	Nut, Hex, Lock, M5 X 0.80, NI, SS	1
38	43555	Clamp, Hose, Wormdrive, 0.25- 0.62D, .31W	1
39	1200328	Pump, Soltn, Ele, 36vdc, 60psi	1
40	1064184	Circuit Breaker, 02.5a, Resettable	2
41	376720	Hose, PVC, Brd, 0.38id 0.60od, Bulk, Clr	1
42	1040868	Capacitor, Plug [.01 Uf, 200v]	1
43	1069671	Harness, Ele [ec- H2O, T12]	1
44	1062403	Fitting, Brs, Snubber, Pm02/Pf02	1
45	1016354	Clamp, Cable, SS, 0.50d X 0.50w [Insul]	6
46	150713	Fitting, Plstc, Tee, Bm04/Bm04/Bm04	2

TENNANT COMPANY  
P. O. Box 1452  
Minneapolis, MN 55440-1452